

PRINCESS V58 • 2009

Ref:PB2413

PRICE: £469,000 INC VAT



OPEN TO PART EXCHANGE • PRINCESS TECHNICAL ORIENTATION INCLUDED

PROFESSIONAL PHOTOGRAPHY, VIDEO AND VIRTUAL TOUR AVAILABLE

UK Tax Paid • Twin Caterpillar C15 (865hp) diesel engines • White hull • Light oak interior wood with satin finish • 3 cabins accommodating 6 guests • ONAN 17.5Kw/50Hz generator • Raymarine navigation equipment • Air-conditioning throughout • 24V and 230V system • EU version VHF • Stainless steel anchor and additional chain • Freshwater anchor/deckwash system • Hardtop with electric GRP sunroof • Dishwasher • Cermic hob • Wetbar • 19" LCD TV and DVD player in master stateroom

PLEASE CONTACT US FOR MORE INFORMATION ON THIS 2008 PRINCESS V58 SPORTS CRUISER MOTOR YACHT FOR SALE

- Established over 40 years.
- Central agency for over 90 brokerage yachts for immediate delivery.
- Specialists in international delivery and the sourcing of yacht taxation advice.
- Access to the global Princess support network.

PRINCESS V58

SPECIFICATION

BUILDER/DESIGNER

Year: 2009
Construction: GRP

ENGINES

No. of Engines: 2
Make: Caterpillar
Model: C15
Fuel Type: Diesel
Hours: 1350
Total Power: 1730 hp

ACCOMMODATION

Cabins: 3
Heads: 2

DIMENSIONS

Length: 18.19 m / 60 ft 8 in
Beam: 4.62 m / 15 ft 1 in

TANKS

Water: 1 x 473 l
Fuel: 1 x 2591 l

LOCATION

Portsmouth, United Kingdom

INVENTORY

HULL COLOUR

- White

DECK EQUIPMENT

- Hard top with electrically operated sliding sunroof including skylights (mechanism overhauled 2023)
- Transom gate leading to bathing platform with electro-hydraulic raise/lower mechanism
- Additional 10m of 10mm anchor chain to make a total of 50 metres
- Foredeck sunbed cushions
- Cockpit seating & aft sunbed cushions in Vanilla Vinyl with Blue insert
- Cockpit seating & aft sunbed cushions in Movida Metallic
- Seating: Plata. Inlay Weiss
- 6x Fenders socks - Navy Blue with Princess Logo
- Foredeck freshwater anchor / deckwash system

- U-shaped seating with folding teak table
- Sunbed aft with garage below
- Electro-hydraulically opening garage with electric winch retrieval system. New charging point fitted to garage (2025)
- Foldaway swimming ladder
- Wetbar including sink with electric barbecue and cool box
- Lockable gas strut assisted hatches to engine room and lazarette
- Lifteraft and rope storage locker
- Locker housing 240v shore support inlet
- Locker with remote fuel cocks
- Cockpit cover
- New full cockpit enclosure (2025)
- Hot and cold transom shower (new mixer 2025)
- New low level deck lighting (2025)
- Stainless steel boat name
- Bow sunbathing cushions (2022)
- Bow rope storage locker
- Stainless Steel coach roof hand rails
- All helm, cockpit and aft sunpad cushions replaced (2022)
- Passerelle
- Teak-laid transom platform, cockpit deck and stairs to side decks
- Reversible electric anchor winch with foredeck and helm position controls
- Self-stowing anchor with chain
- Stainless steel cleats, fairleads and handrails
- Foredeck rope locker
- Remote control searchlight
- Fenders & warps
- Icemaker

SHIPS SYSTEMS

- ONAN 17.5Kw/50Hz generator (fully serviced April 2025)
- 24V and 230V systems
- Bow and Stern thrusters (new blades 2025)
- Reverse cycle air-conditioning including cockpit
- System 2 - Toilets discharging into the holding tank and also able to discharge directly overboard via a Y valve fitted in the discharge lines. Holding tank has electric overboard discharge as well as reserve manual and dockside overboard discharge facilities
- Pressurised hot and cold water system
- Water heated by engine calorifier or 230V immersion heater
- 4x Engine start batteries
- 4x Service batteries
- Batteries charged by engine alternator or 230V battery charger (Mastervolt, new 2023)
- Automatic electric bilge pumps (with manual override) in engine bay, forward accommodation and aft lazarette
- Twin rudders (new bearings April 2025)
- Electronic engine controls
- Engine room extractor fans
- Electric trim tabs with indicators
- Engine room lighting
- Shaft drive to nickel aluminium bronze propellers

Cockpit Air-Conditioning:

- Condensing unit 36,000 BTU supply 3 x 12,000 BTU outlets in cockpit area (with single SMX control) in addition to System A
- (detailed below)
- Condensing unit 16,000 BTU supplying 16,000 BTU outlet in Saloon (with SMX control)
- Condensing unit 10,000 BTU supplying 10,000 BTU outlet in Forward cabin (with SMX control)
- Condensing unit 12,000 BTU supplying 12,000 outlet for Port & Starboard cabin (with SMX control in Starboard cabin)
- This also includes outlets in toilet compartments

PRINCESS V58

INVENTORY

NAVIGATION EQUIPMENT

- Navigation lights (LED, 2022)
- Two Raymarine i70s multi-function displays (2022)
- Raymarine radar (2022)
- Raymarine 16" Axion Hybrid Touch GPS/Plotter (2022)
- Raymarine autopilot (2022)
- Raymarine Ray 53 VHF DSC (2022)
- Transducer
- Two dummy domes
- Power assisted hydraulic steering
- Fitted with an EU version VHF (# 680215)

INTERIOR FITOUT

- 3x guest cabins accommodating 6 guests
- 2x guest heads (1 ensuite and 1 ensuite/day head)
- Wardrobe, overhead and individual berth lights, storage lockers in all cabins
- Both bathrooms feature full shower stalls, electric freshwater toilets, washbasin with mixer tap, extractor fan (2022) mirror and storage lockers
- Light Oak interior wood Satin finish
- Light Oak Contrast - Rocca Col 6 Ebano & Lado 878 (Dark Brown)
- LED lighting throughout

CARPET:

- Low loop Beige

SALOON

- Upholstery: Ultraleather Taupe
- Semi-circular sofa with dining table
- 2 circular stools with purpose made stowage
- Deck hatch with blind
- Cocktail cabinet
- Overhead downlighters and concealed lighting
- Sliding door to cockpit
- Main electrical control panel with freshwater gauge

GALLEY

- Avonite worktop
- Storage cupboards, drawers and lockers
- Teak decking in galley area

LAZERETTE

- Access from aft cockpit
- New gas strut for hatch (2025)

MASTER STATEROOM

- Roman Blinds: Labyrinth Mocha
- Quilt: Labyrinth Mocha
- Bedhead: Lado 878
- Double bed with drawers
- Dressing table
- Ensuite
- Sofa

FORWARD CABIN

- Curtains: Gatsby Mocha
- Quilt: Gatsby Mocha
- Bedhead: LADO 878
- Double bed with drawers
- Deck hatch with integrated skylight and blind
- Ensuite/day head - Access door from the passageway as well as from the cabin
- Deck hatch with flyscreen and blind

PORT CABIN

- Curtains: Gatsby Mocha
- Quilt: Gatsby Mocha
- Bedhead: LADO 878
- 2x single berths with drawers below

INTERIOR EQUIPMENT

- 6-place table top dishwasher (new 2022)
- Princess Glasses - 6 wine, 6 tumblers
- 3-zone ceramic hob
- Microwave (2022)
- Stainless steel sink with mixer tap
- Full-height fridge/freezer
- Waste bin
- Storage cupboards, drawers and lockers
- Under-floor storage

AUDIO VISUAL EQUIPMENT

- 19" LCD TV and DVD player in master stateroom (includes connection to TV aerial and 220v power)
- Radio/iPod/MP3 player and speakers
- New Fusion cockpit stereo & speakers (2025)

BROKER COMMENTS

- Lifted, antifouled, new anodes, full polish and ceramic coating (April 2025)
- Engine hours run to August 2025: 1350 approximately
- Full engine service including oil samples: April 2025

DISCLAIMER

In this case we are acting as Brokers only.

The Vendor is not selling in the course of a business. Whilst every care has been taken in their preparation, the correctness of these particulars is not guaranteed. The particulars are intended only as a guide and they do not constitute a term of any contract. A prospective buyer is strongly advised to check the particulars and where appropriate at his own expense to employ a qualified Marine Surveyor to carry out a survey and/or to have an engine trial conducted which if conducted by us shall not imply any liability for such engine on our part.

PRINCESS V58 PHOTOS



EST 1964

OUR KNOWLEDGE IS YOUR LUXURY

> OPEN TO PART EXCHANGE

WE CAN HELP SPEED UP THE SALE THROUGH OUR OFFER TO UNDERWRITE A PART-EXCHANGE AGAINST THE BROKERAGE YACHT

> PRINCESS TECHNICAL ORIENTATION INCLUDED

AT NO ADDITIONAL COST, REGARDLESS OF WHERE THIS YACHT IS LOCATED, WE OFFER A COMPREHENSIVE TECHNICAL INTRODUCTION TO YOUR PURCHASE

> PROFESSIONAL PHOTOGRAPHY, VIDEO & 3D TOUR AVAILABLE

VIEW IMAGERY, VIDEO AND A 3D TOUR/WALKTHROUGH OF THIS YACHT ONLINE



brokerage@princess.co.uk

+44 (0)1489 557755

www.princessmotorvachtsales.com



PRINCESS V58 PHOTOS

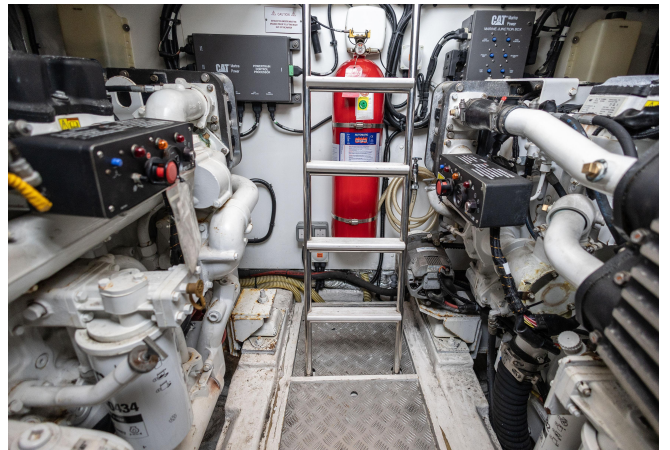


PRINCESS V58 PHOTOS









FINANCE AND INSURANCE
AVAILABLE ON THIS
PRINCESS YACHT

Contact
finance@princess.co.uk
insurance@princess.co.uk
for information.



PRINCESS MOTOR YACHT SALES

