

# V 58



## V58

The latest addition to the V Class range, the dynamic new V58, is available in two versions - Open or Deck Saloon. The open model with a full-length cockpit and sunroof is perfect for cruising the Med, whilst the flexible enclosed deck model can be climate controlled or opened to the elements via triple sliding aft doors and a retractable sunroof. Her large, dynamic hull windows let light pour into the beautifully appointed lower accommodation. With three guest cabins, two of which enjoy an en suite, and the option to specify an extra cabin aft - she's an altogether striking craft.

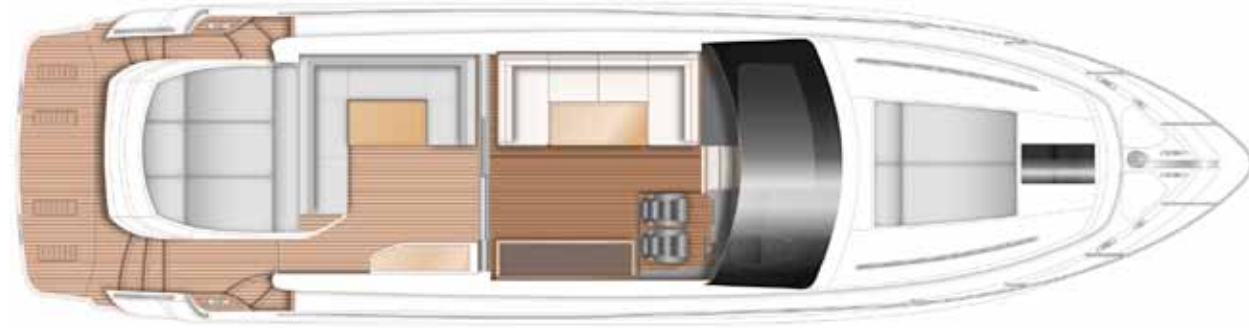
Le nouveau V58 est disponible en deux versions: à pont ouvert ou avec un salon fermé. Le modèle ouvert avec un cockpit sur toute la longueur et un toit ouvrant est idéal en Méditerranée, le modèle flexible à pont fermé peut être climatisé ou ouvert pour laisser pénétrer le soleil grâce à des triples portes coulissantes à l'arrière et un toit ouvrant rétractable. Ses grandes fenêtres profilées dans la coque laissent pénétrer la lumière en abondance dans les cabines magnifiquement équipées situées au-dessous. Avec trois cabines, dont deux avec salle de bains attenante, et la possibilité d'aménager une cabine supplémentaire à l'arrière, c'est un yacht remarquable à tous égards.

Die neue V58 ist in zwei Versionen erhältlich: als Open-Version oder als Deck-Salon-Version. Als Boot mit offenem Deck über die gesamte Länge eignet sich das Boot perfekt für Fahrten auf dem Mittelmeer. Das Bootmodell hat ein flexibles überdachtes Deck, dass mit einer Klimaanlage angepasst werden kann, oder das über Dreierschiebetüren auf dem Achterschiff mit einem zurückklappbaren Schiebedach geöffnet werden kann. Durch die großen, dynamischen Bullaugenfenster fällt das Sonnenlicht in den wunderschön ausgestatteten unteren Raum. Mit ihren drei Kabinen, von denen zwei eine Ensuite haben, und der Option, im Achterschiff eine zusätzliche Kabine zu konzipieren, ist die V58 insgesamt ein ins Auge fallendes Boot.

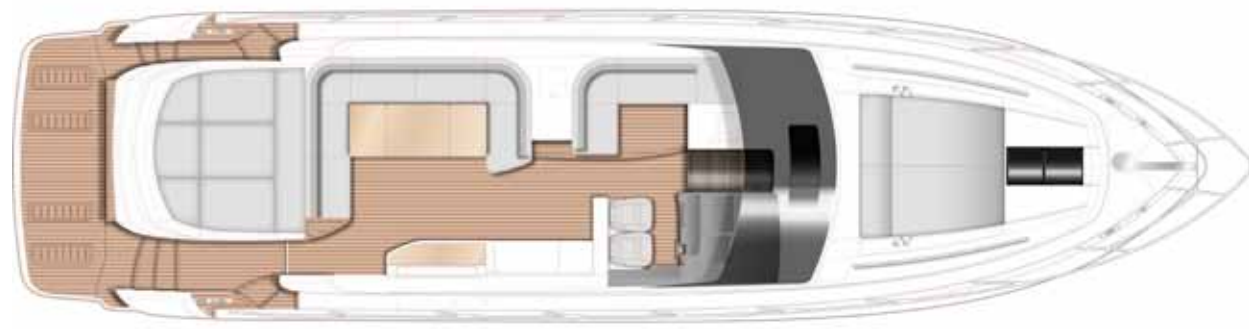
Come suggerisce il nome, il Princess V58 Open è disponibile con ponte aperto, pozzetto a lunghezza completa e tetto apribile, perfetto per il Mediterraneo. C'è anche un modello a ponte chiuso che può essere aperto al sole tramite triple porte scorrevoli in poppa e un tetto retrattile. La grande finestra dinamica nello scafo lascia filtrare la luce nelle cabine sottocoperta splendidamente arredate. Con tre cabine, due delle quali provviste di bagno privato e la possibilità di avere un'ulteriore cabina a poppa, è uno yacht del tutto sorprendente.

Новейшая модель V-класса, спортивная V58, доступна в двух версиях — "Open" или "Deck Saloon". Princess V58 Open с салоном практически во всю длину корпуса идеально подходит для путешествий по Средиземноморью. Версия "Deck Saloon" позволит Вам регулировать климат в салоне с помощью тройных раздвижных дверей и большого люка в крыше. Внушительных размеров панорамные окна салона пропускают дневной свет в роскошные помещения на нижней палубе. С тремя каютами, две из которых имеют персональные ванные комнаты, и возможностью оборудовать ещё одну дополнительную каюту в кормовой части — она произведение искусства.

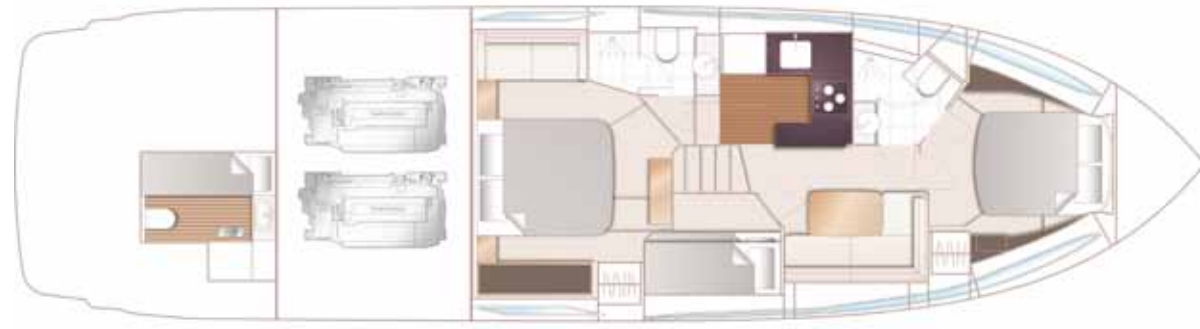




MAIN DECK



MAIN DECK - OPEN



LOWER DECK



LOWER DECK - OPEN

PRINCIPAL DIMENSIONS

Length overall (incl. pulpit)	60ft 4in (18.42m)
Length overall (excl. pulpit)	59ft 2in (18.03m)
Beam	15ft 3in (4.65m)
Draft	4ft 2in (1.27m)
Displacement approx.	20,500kg (45,200lbs)*
Fuel capacity	484 gal/581 US gal/2,200l
Water capacity (incl. calorifier)	110 gal/132 US gal/500l

ENGINE OPTIONS - DIESEL

Twin Volvo D13-800 (2 x 800hp)	Speed range: 34-36 knots†
Twin Volvo D13-900 (2 x 900hp)	Speed range: 35-37 knots†

DECK FITTINGS

- Teak-laid transom platform, cockpit deck and stairs to side decks
- Reversible electric anchor winch with foredeck and helm position controls
- Self-stowing 25kg/55lbs Delta anchor with 40m of chain
- Stainless steel cleats, fairleads and handrails
- Foredeck rope locker
- Remote control searchlight

COCKPIT

- U-shaped seating with folding teak table
- L-shaped seat (Open)
- Sunbed aft with garage below
- Transom gate leading to bathing platform with electro-hydraulic raise/lower mechanism, foldaway swimming ladder and hot and cold shower
- Wetbar including sink with electric barbecue and coolbox
- Radio/iPod/MP3 player with waterproof speakers (Open)
- Lockable gas strut assisted hatches to engine room and lazarette
- Liferaft and rope storage locker
- Locker housing 240v shore support inlet
- Locker with remote fuel cocks
- Cockpit cover

HELM POSITION

- Twin helm seats with fore and aft adjustment for helmsman
- Electric opening window at helm position
- Full engine instrumentation including fuel gauges, engine controls and rudder position indicator
- Navigation system including colour radar, GPS and chartplotter, VHF/RT, speed and distance log, echo sounder with alarm, autopilot and high speed magnetic compass
- Controls for bow thruster, windscreen wipers, bilge pump, anchor winch and trim tabs (with indicator)
- Chart table
- Remote control searchlight
- 12v outlet

DECK SALOON

- Triple opening stainless steel framed sliding doors to cockpit
- U-shaped sofa with dining table
- 46" LED TV on electric raise/lower mechanism and DVD, radio/MP3 with saloon and cockpit speakers
- Sideboard unit with glass and bottle storage and refrigerator
- Electric opening roof
- Opening window to port

LOWER SALOON

- L-shaped sofa with table
- Storage lockers
- 32" LED TV, DVD, radio/MP3 with surround system (Open only)

GALLEY

- 4-zone ceramic hob
- Combination microwave/conventional oven with grill
- Stainless steel sink with mixer tap
- Full-height fridge/freezer
- Waste bin
- Storage cupboards, drawers and lockers
- Under-floor storage

ACCOMMODATION

- All cabins and bathrooms feature opening portholes
- All cabins feature 220/240v power points
- All mattresses pocket sprung
- All bathrooms feature full shower stalls, electric freshwater toilets, extractor fan and 240v shaver points

OWNER'S STATEROOM

- Large double bed with drawers below
- Wardrobe with shelves
- Sofa
- Dressing table
- Stereo radio/MP3
- Storage lockers and drawers
- Overhead and individual berth lights
- En suite bathroom

FORWARD GUEST CABIN

- Large double bed with drawers below (option of scissor berths)
- Wardrobe with shelves
- Storage lockers
- Deck hatch with integrated skylight and blind
- Overhead and individual berth lights
- En suite bathroom (with day access)

STARBOARD GUEST CABIN

- Two single berths with drawers below
- Wardrobe with shelves
- Storage lockers
- Overhead and individual berth lights

OPTIONAL AFT CABIN

- Single berth with storage below
- Wardrobe with shelf
- Storage lockers
- Overhead and individual berth light
- Electric freshwater toilet and wash basin

INTERIOR FINISH

- Furniture in Rovere Oak with satin or high gloss finish. American Walnut or Alba Oak available as an option
- Avonite worktops and tiled floors in all guest bathrooms
- Avonite worktop and timber-laid floor in galley
- Choice of high quality carpet and upholstery fabric from extensive range
- Curtains, blinds or sunscreens to all windows and portholes

POWER AND DRIVE SYSTEMS

- 4-bladed propellers in nickel aluminium bronze
- Bow thruster (120kgf/265lbf)
- Power-assisted electro-hydraulic steering system with hydraulic back-up
- Electronic engine and gear shift controls
- Dripless shaft seals
- Engine room extractor fan with electronic time delay

ELECTRICAL SYSTEMS

- 24 Volt:**
- 4 x heavy-duty batteries for engine starting
  - 4 x heavy-duty auxiliary batteries
  - 60 amp battery charger charging both banks of batteries via automatic switch charging system
  - LED lighting throughout

220/240 Volt:

- 11kw diesel generator in own sound shield with water cooled specially silenced exhaust
- Polarity check system
- Earth leakage safety trip
- Power points to all areas

FUEL SYSTEM

- Twin fuel tanks (in NS8 marine grade alloy) with interconnection system giving 484 gal/581 US gal/2200l capacity
- Fuel fillers on port and starboard side decks
- High capacity fuel filters/water traps

WATER SYSTEM

- 95 gal/114 US gal/430l plus 16 gal/19 US gal/73l hot water calorifier and heated by engine and 240v immersion heater
- Water level gauge
- Deck filler

FIRE EXTINGUISHERS

- Automatic/manual override fire extinguishers in engine room with manual override
- Hand-operated fire extinguishers (5) in owner's stateroom, guest cabins, galley and helm position

BILGE PUMPS

- Automatic electric bilge pumps (6)
- High-capacity manual bilge pump with valve system and suction points in same areas

OTHER ITEMS SUPPLIED AS STANDARD

- Ensign staff
- Fenders (6) and warps (4)
- First aid kit
- Tool kit
- Set of manuals
- Quilted bedspreads in all cabins



