

PRINCESS X95045

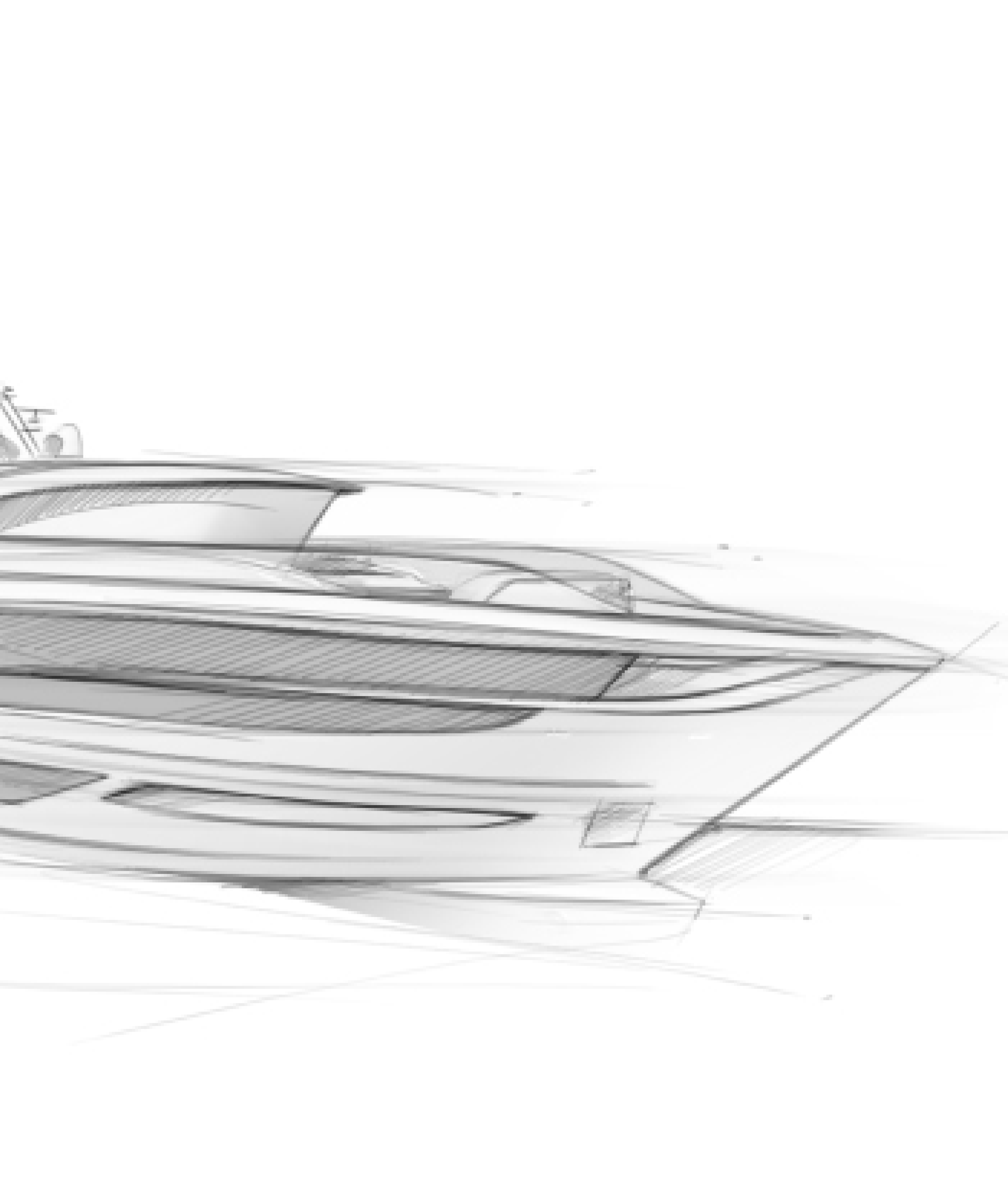




CONTENTS

PRINCESS X95045

Introduction	3
Hull Design	4
Exterior	5
Interior	11
Profile	32
Layouts	33
Principal Dimension	40
Boat Specific Specification	41
Detailed Specification	43



INTRODUCTION

IntoXicating, eXtreme, eXciting... she is unlike any other yachting experience to date.

The X95 is not trying to fit into a niche that already exists - she is unique, she doesn't follow the crowd. She is not trying to be an explorer, and she is not trying to be a day boat. She is at once everything you know, yet nothing you recognise. The X95 has been developed to offer a unique boating lifestyle, one that is tailored to how each owner wants to use their yacht. The X95 is at once an open-concept dream, whilst retaining a host of distinct spaces, creating boundaries without walls. Boasting class-leading outdoor space, she has been painstakingly designed to offer the most practical and user friendly experience, while keeping design and style at the forefront. Re-defining 'flybridge' and establishing an entirely new 'Superfly' X Class.

Princess Yachts' long-standing naval architect, Bernard Olesinski, has partnered with Italian design heavyweights Pininfarina to create the ultimate in avant-garde yacht architecture. The X95 makes a statement wherever she goes, and her sharp, masculine lines and purposeful bow give her an air of perpetual motion, always ready to start her next adventure.

The X95 may be ground-breaking, but she stills remains a Princess. Beautiful design, flawless interior fit out and an unrivalled aftersales experience are a staple across the fleet, and the X95 is no different. The X95 'Superfly' is a true Princess: she is always moving forward, breaking down boundaries and shattering eXpectations.

HULL DESIGN

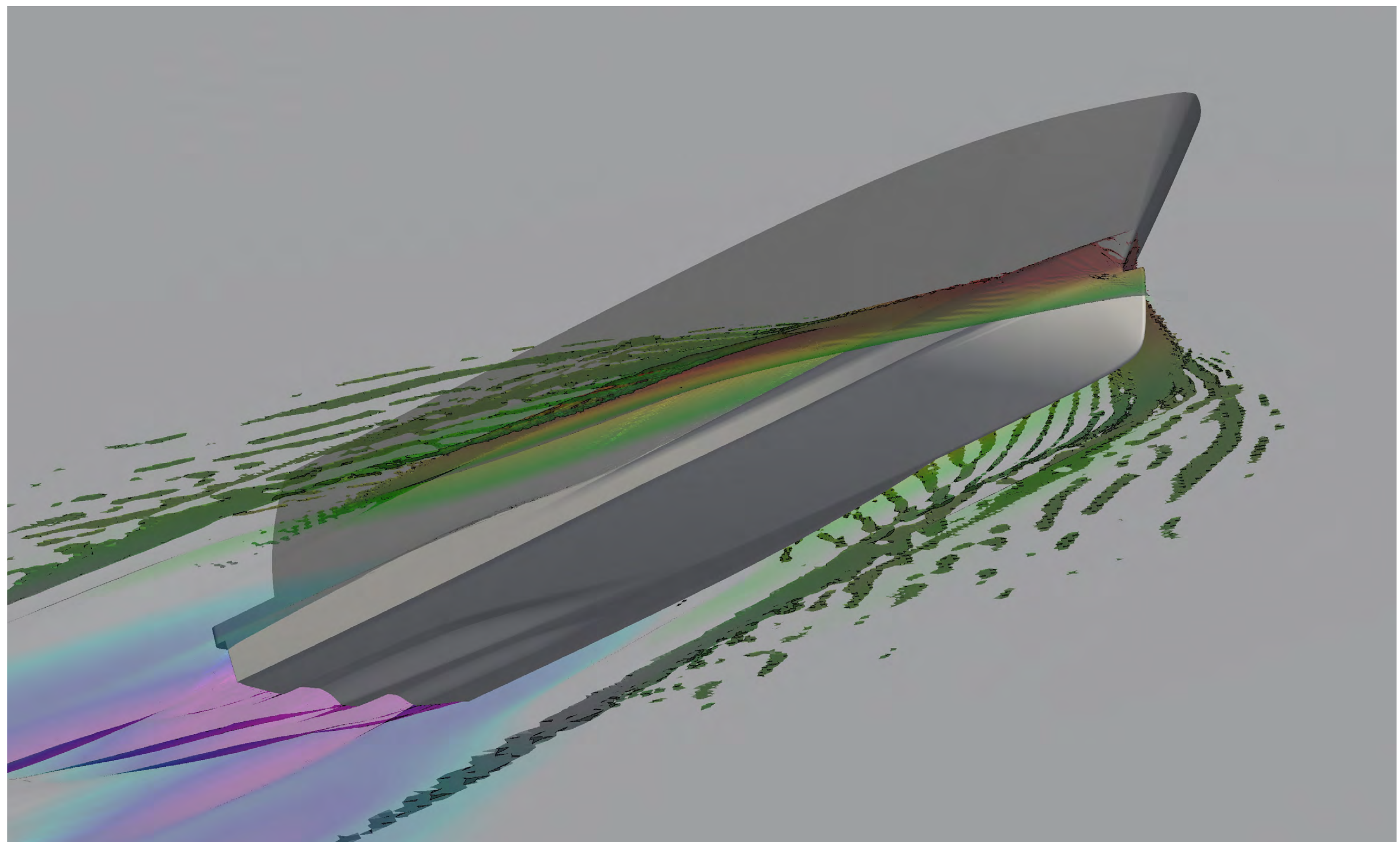
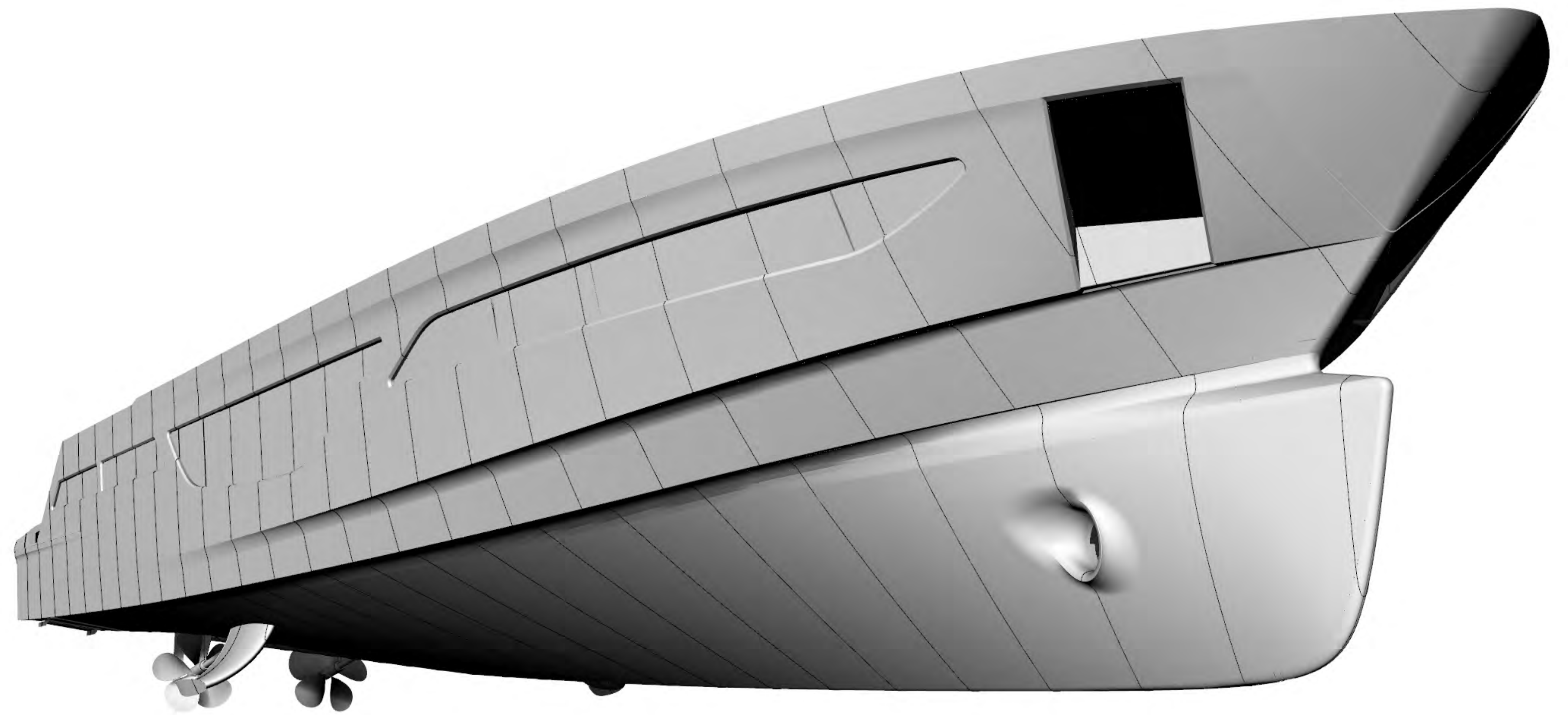
Over recent years there has been a quiet revolution in the methods used to design a Princess hull. Years of experience building fast and seaworthy hulls are now complimented by the cutting edge in simulation techniques.

This involves applying machine learning methods to computational fluid dynamics results to select the optimum design parameters for each specific application.

For the X95 this approach has led to a transformation the well-proven qualities of a deep vee hull by improving efficiency across the speed range whilst ensuring the highest levels of sea-keeping and predictable handling.

To achieve this the X95 is equipped with a wave-piercing bow that extends the waterline forward and provides a fine, high deadrise entry. The benefits of this bow shape are further enhanced by extending the hull surfaces aft under the bathing platform.

The result is a hull that will transition smoothly from highly efficient low cruising speeds to maximum speed whilst maintaining optimum trim angle and ride comfort in all conditions.



EXTERIOR



FLYBRIDGE



FLYBRIDGE



FLYBRIDGE
WITH OPTIONAL SPA BATH



FLYBRIDGE



EXTERIOR



FLYBRIDGE
SKYLounge



FLYBRIDGE
SKYLOUNGE



MAIN DECK
COCKPIT



MAIN DECK
SALOON



MAIN DECK
SALOON



MAIN DECK
GALLEY



MAIN DECK
GALLEY



MAIN DECK
MASTER STATEROOM



MAIN DECK
MASTER STATEROOM



MAIN DECK
MASTER STATEROOM BATHROOM



LOWER DECK
MASTER STATEROOM



LOWER DECK
MASTER STATEROOM BATHROOM



LOWER DECK
FORWARD CABIN



LOWER DECK
FORWARD CABIN



LOWER DECK
PORT CABIN



LOWER DECK
BEACH CLUB



LOWER DECK
BEACH CLUB



LOWER DECK
BEACH CLUB



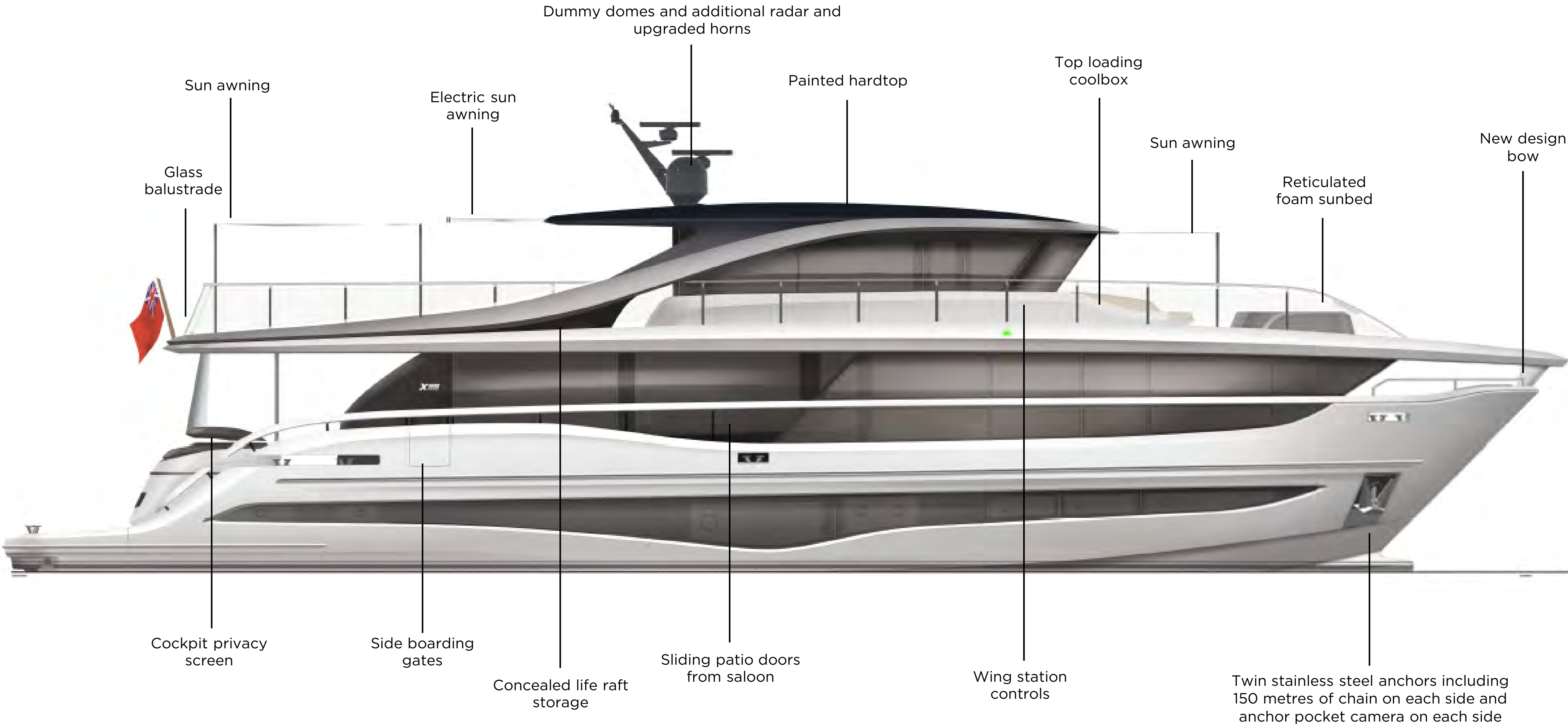
LOWER DECK
CAPTAIN'S CABIN



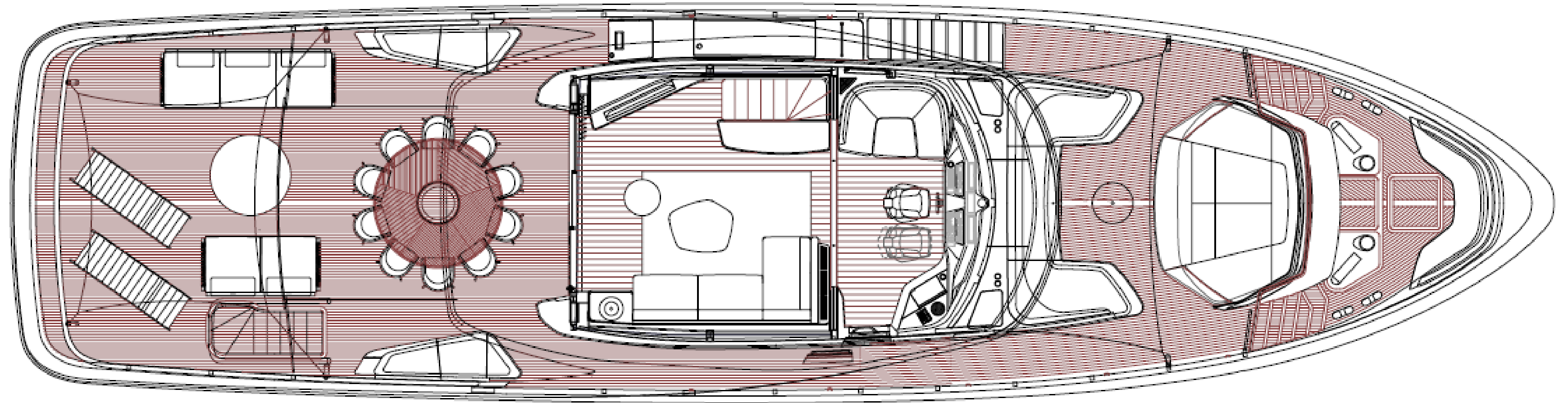
LOWER DECK
CREW CABIN



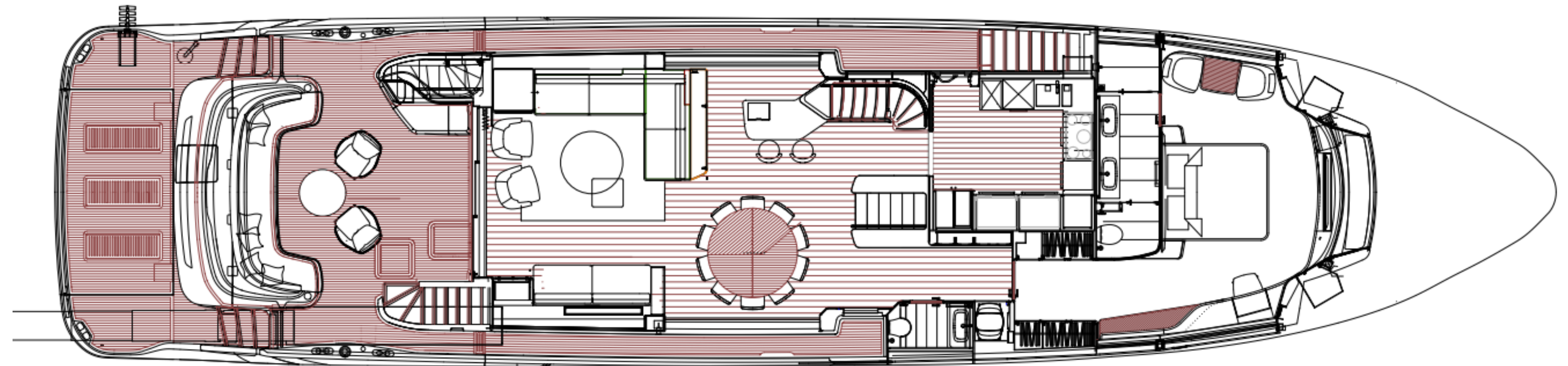
PROFILES



LAYOUTS



FLYBRIDGE

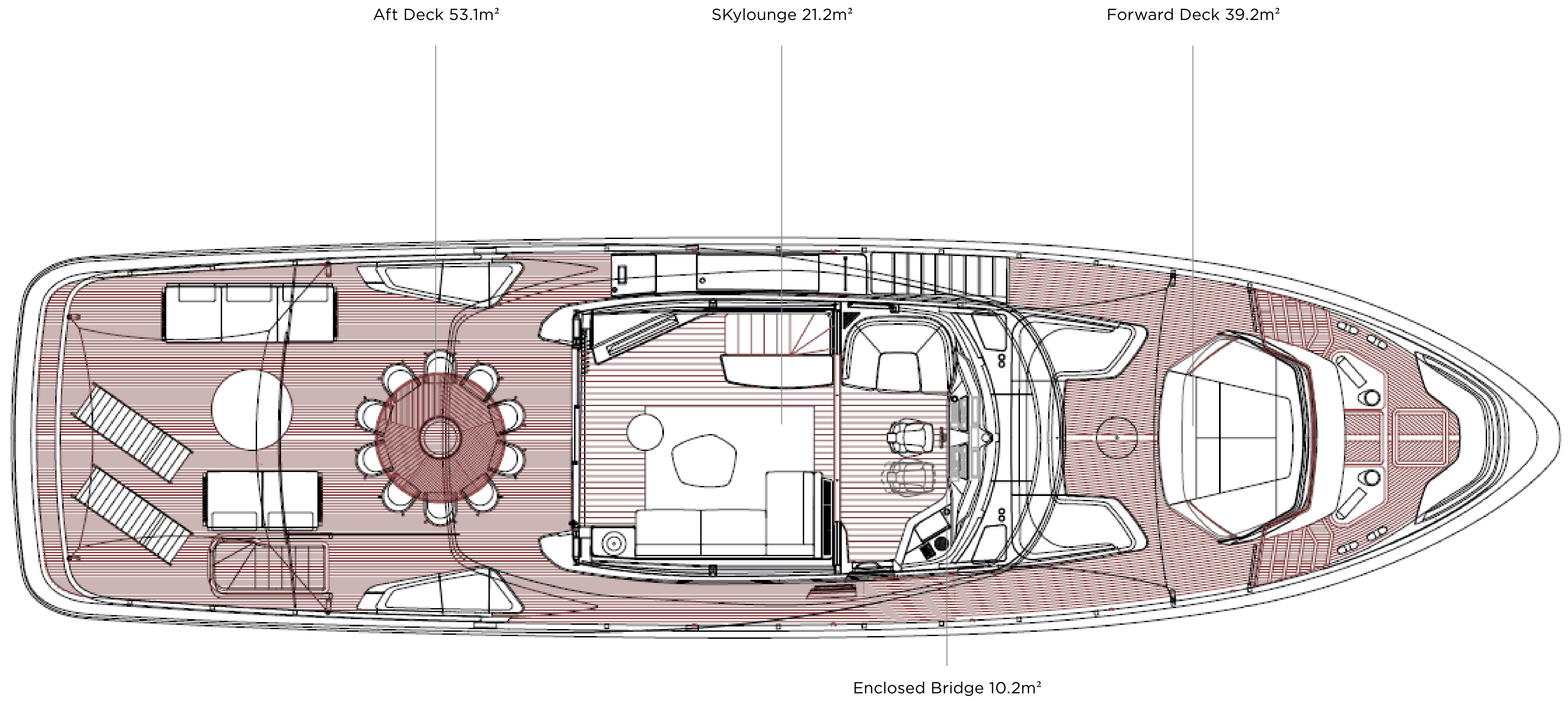


MAIN DECK

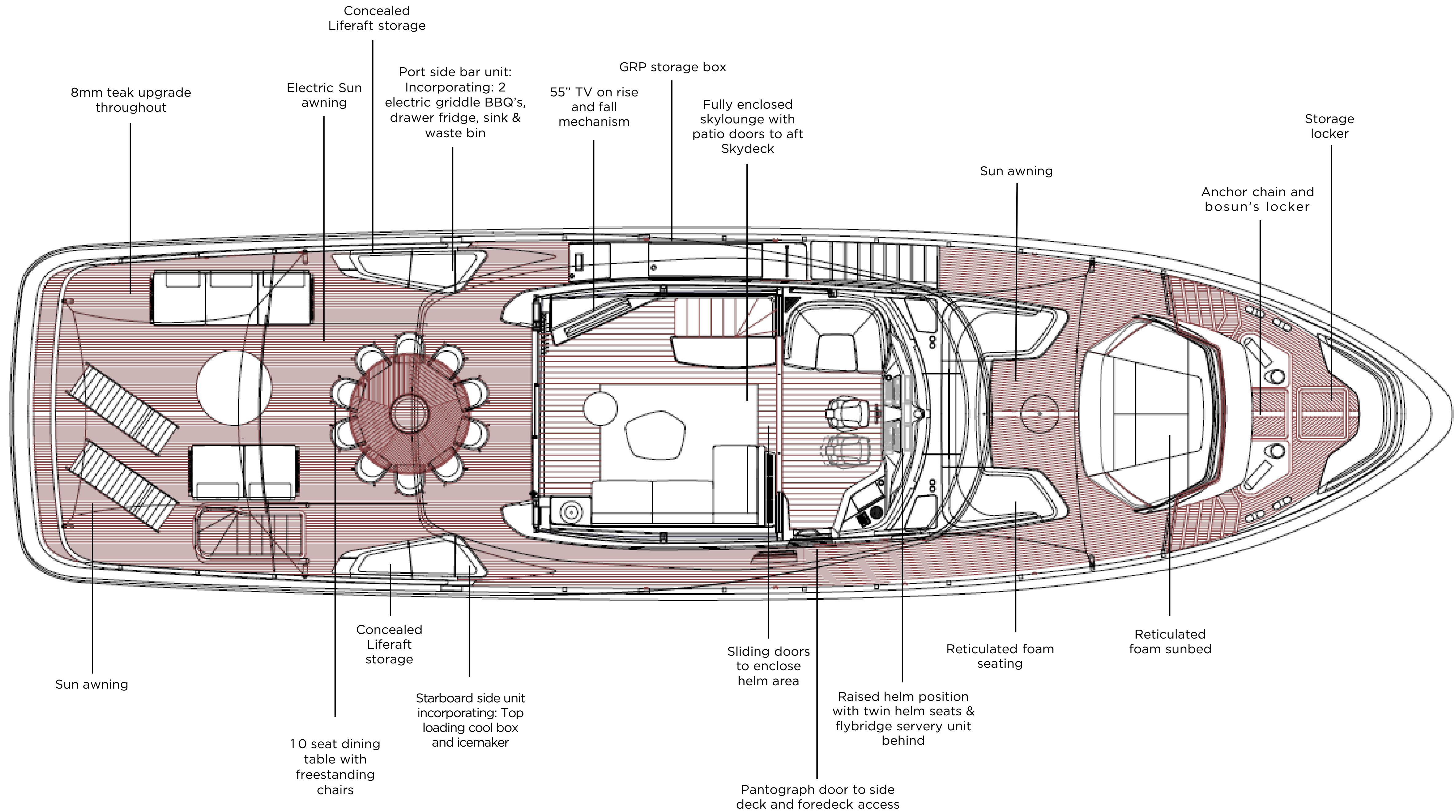


LOWER DECK

SQUARE METREAGE FLYBRIDGE



SQUARE METREAGE FLYBRIDGE

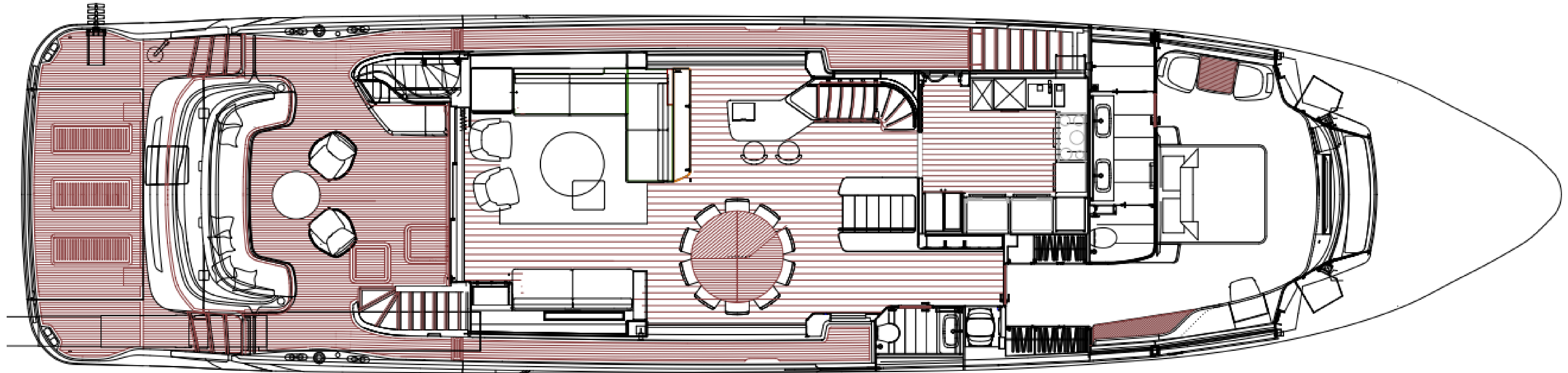


SQUARE METREAGE MAIN DECK

Cockpit 24.5m²

Saloon 44.3m²

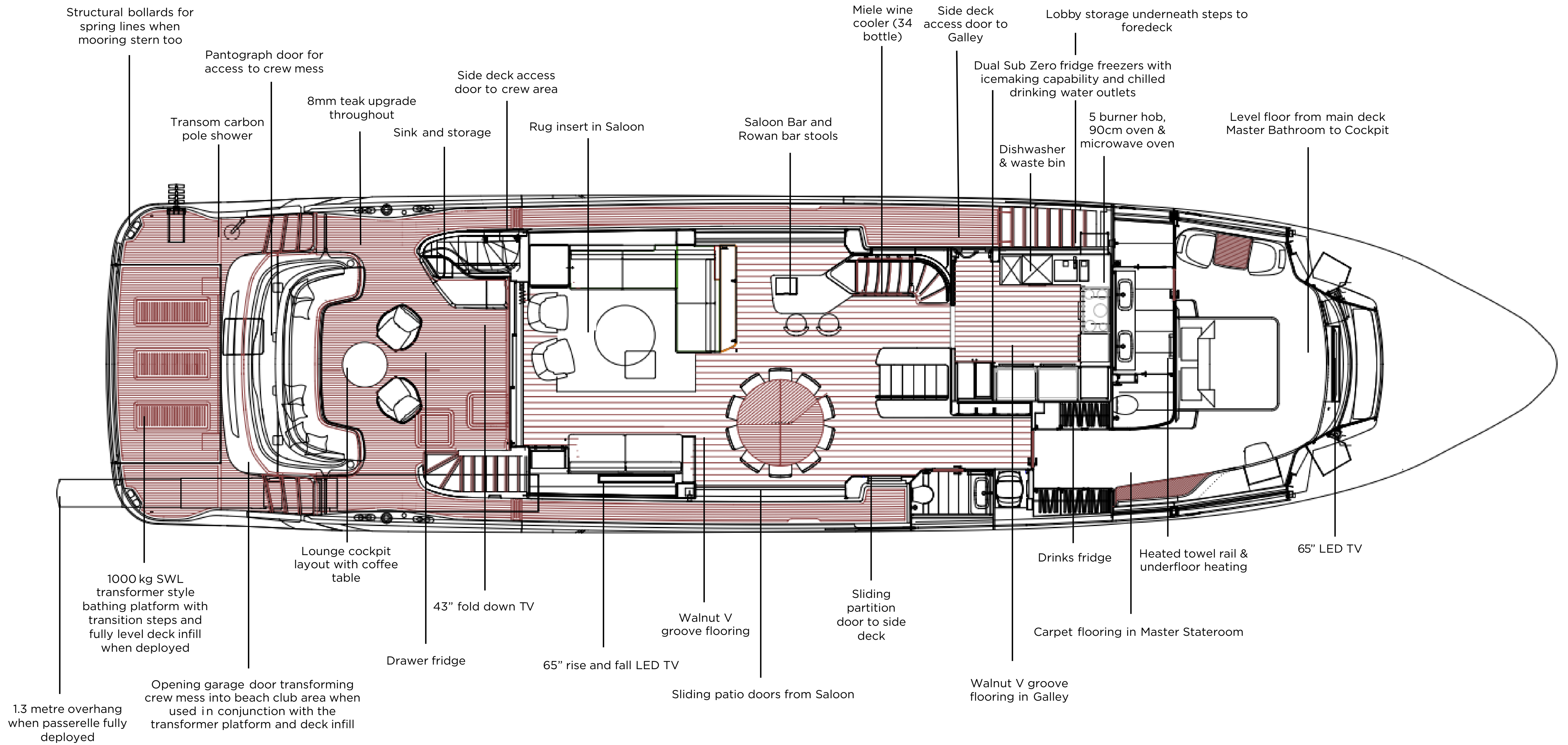
Country Kitchen 9.1m²



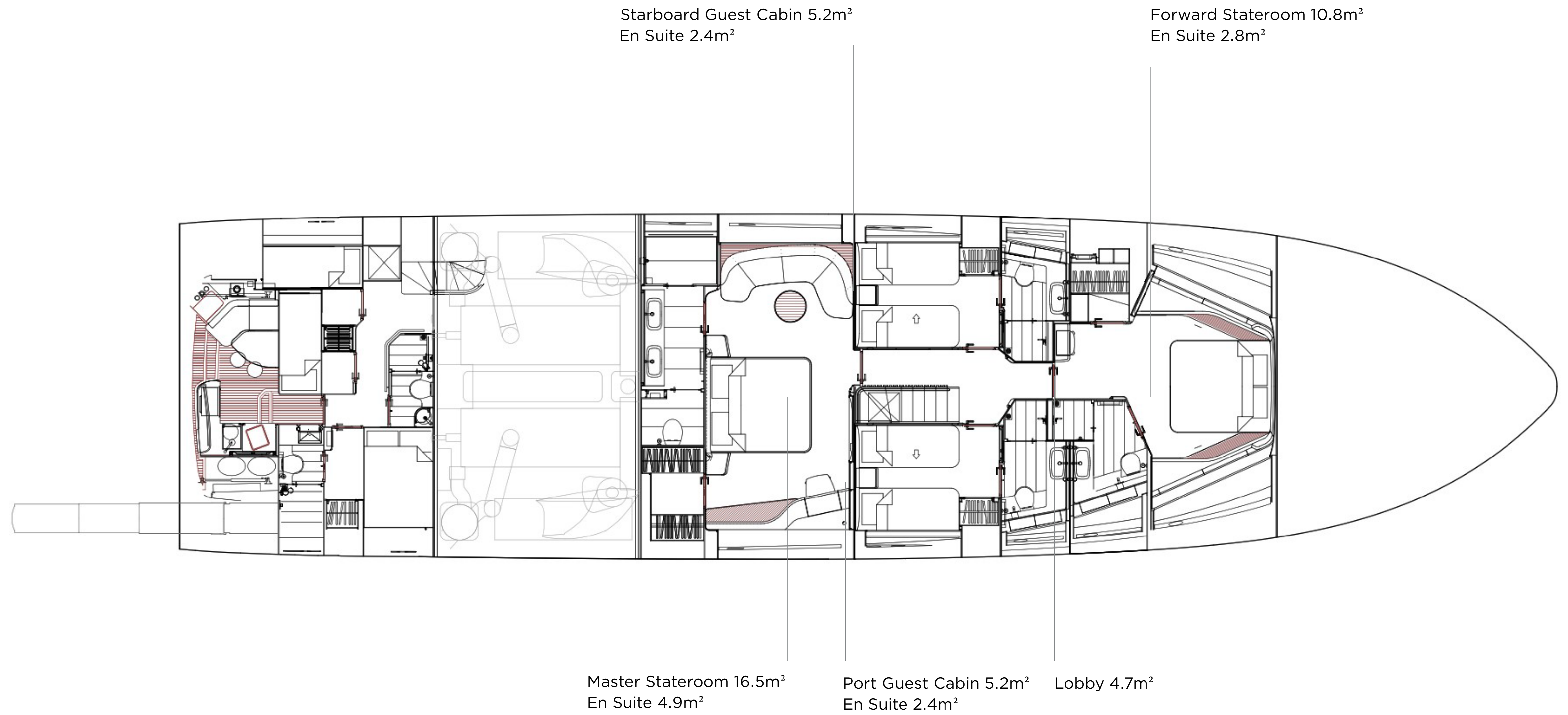
Day Head 1.8m²

Forward Dining Area 19.2m²

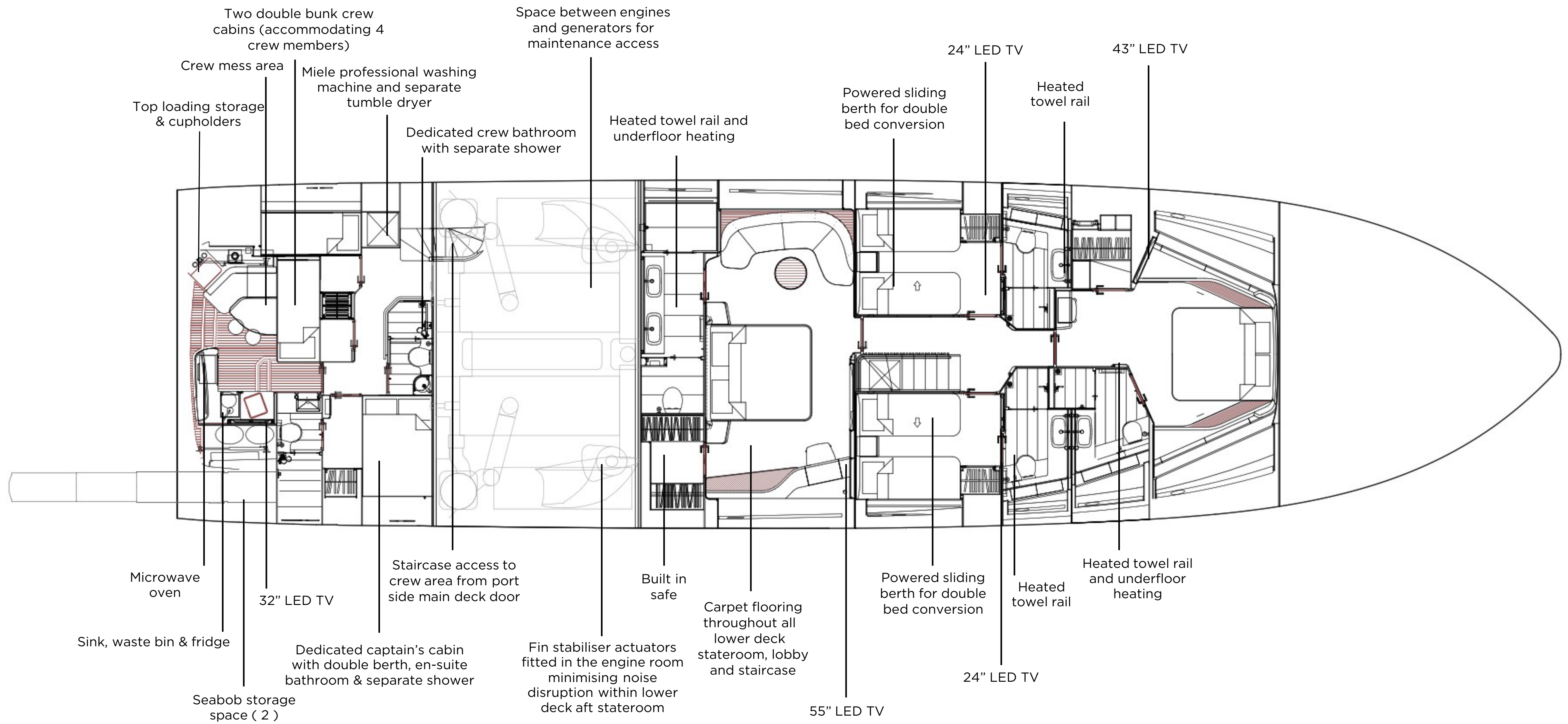
SQUARE METREAGE MAIN DECK



SQUARE METREAGE LOWER DECK



SQUARE METREAGE LOWER DECK



SPECIFICATION

PRINCIPAL DIMENSIONS

Length overall (incl.pulpit)	95'4"	29.0m
Length overall (excl. pulpit)	95' 4"	29.0m
Beam	21'10"	6.65m
Draft	6'8"	2.03m
Displacement approx	112,409kg / 247,819lbs	
Fuel capacity	3,040 gal / 3,650 US gal / 13,818l	
Water capacity (incl. calorifier)	410 gal / 492 US gal / 1,865l	
Hot Water calorifiers	45 gal / 54 US gal / 205l	
Black water tank	160 gal / 192 US gal / 727l	
Grey water tank	248 gal / 298 US gal / 1,129l	

ENGINES

MAN V12 (2 x 2000mhp)	Maximum speed range – 22 - 24 knots [†]
-----------------------	--

[†] Speeds are given at half load condition with boat to standard specification and with no additional equipment on board. Speeds are estimated and given in good faith but without warranty.

BOAT SPECIFIC SPECIFICATION

AUDIO AND VISUAL COMMUNICATIONS (PREMIUM AUDIO UPGRADE)

- Decksaloon- 65" LED TV on a power lift, NAIM Uniti Star, Focal speakers (4), Subwoofer
- Maindeck Master- 65" LED TV on a power lift, NAIM Uniti Atom, Focal speakers (4), Subwoofer
- Aft VIP Stateroom- 55" LED TV, NAIM Uniti Atom, Focal speakers (2), Subwoofer
- Forward Stateroom- 43" LED TV, NAIM Uniti Atom, Focal speakers (2), Subwoofer
- Port Cabin- 24" LED TV, NAIM Uniti Atom, Focal speakers (2)
- Starboard Cabin- 24" LED TV, NAIM Uniti Atom, Focal speakers (2)
- Skylounge- 55" LED TV on a power lift, NAIM Uniti Atom, Focal speakers (4), Subwoofer
- Flybridge- NAIM Uniti Atom, JL Audio waterproof speakers (4), Subwoofer & Amplifier
- Foredeck- NAIM Uniti Atom, JL Audio waterproof speakers (2)
- Cockpit- NAIM Uniti Atom, JL Audio waterproof speakers (2), Subwoofer & Amplifier
- Beach Club/ Crew Mess- 32" LED TV, NAIM Uniti Atom, JL Audio waterproof speakers (2)
- Combination inverter charger fitted to provide seamless power transfer when switching from generator to shore power
- Onboard WIFI network & 4G internet capability. All areas fitted with HDMI input ports & RJ45 outlets in the Saloon and Stateroom

DECK HARDWARE

- 8 mm teak decking throughout
- Twin stainless steel anchors with 150 metres of 14 mm chain each
- Mooring package with leather fender saddles (8)
- Side entry gates aft to port & starboard side decks
- Cockpit servery unit, incorporating drawer fridge, sink, top loading coolbox and storage
- Electric aft awning fitted to upper deck (Anthracite Grey fabric)
- Flybridge port side bar unit with 2 electric griddle type barbeques, drawer fridge, sink and waste bin
- Flybridge starboard side bar unit fitted with top loading cool box and icemaker
- Flybridge GRP storage box on portside between skylounge and outboard rails
- Kettal Zig Zag coffee table with tray and deck mounted fixing point on foredeck
- Plug in carbon pole shower and deck socket at port side of bathing platform
- Two dummy KVH statelite domes

ENGINEERING

- Twin MAN V12 - 2000 (2x 2000 mhp)
- Variable speed Hydraulic stern thruster
- Vector fin stabilisers
- Upgraded generators (2) 50 kW
- Spot Zero combined water maker and water purification unit (190l/hr)
- Gulf spec - Air conditioning/heating 402,000 BTU fan capacity & 288,000 BTU chiller capacity

- Electrosea Electro strainer on air conditioning sea water inlet
- Vessel manoeuvring wing station on starboard side of flybridge

ELECTRICAL

- Multi sockets 220/240V sockets throughout
- Wine cooler (34 bottles) fitted in saloon sideboard
- Icemaker fitted in flybridge wet bar unit
- High impact anchor pocket cameras
- Upgrade horn to twin Kahlenberg including signal timer
- Optional top loading cool box in place of starboard foredeck storage locker.
- Additional fixed CCTV cameras as follows: Flybridge, Starboard sidedeck & Portside deck
- Underwater lights on transom (4)
- Underwater lights on hull sides (4 per side at aft end)
- Miele Professional washing machine and tumble dryer fitted in the crew lobby
- Heated towel rails in all guest bathroom (5)
- Under floor heating in main deck master, lower deck lower deck forward and aft VIP staterooms (3)
- Exterior lighting upgraded package and Exterior decorative lighting upgrade.
- Interior lighting upgrade package
- Electric sheer roller blinds in main deck master stateroom, lower deck aft stateroom and lower deck forward stateroom
- Minibar fridge in main deck master stateroom including set of champagne (2), wine (2) and tumbler (2) crystalware

- AGM 90 Ah batteries in place of standard
- Prepared for retro fit of VSAT and TV decoders
- Dial in CCTV system with recording facility
- Combination toilet/ bidet in master stateroom bathroom
- Electric Roman blinds to all main deck living area windows
- Electric curtains to saloon patio doors and sky lounge patio doors.
- FLIR Stabilised thermal camera with colour low light and joystick.
- Electric sheer blinds outboard of roman blinds in main deck stateroom and forward and aft VIP cabins

INTERIOR FINISHES

- Walnut satin interior timber finish
- Walnut V groove Saloon and Dining area flooring with inlaid rug to saloon area

LAYOUT

- Starboard cabin to feature powered sliding bunks
- Port cabin to feature powered sliding bunks
- Forward main deck master stateroom to include mini bar refrigerator and combination toilet/ bidet in en-suite.
- Saloon to have L shaped sofa to port with two arm chairs aft and a sofa to starboard.
- Cockpit coffee table and arm chairs in place of standard teak dining table and chairs
- Bespoke crew layout with 3 cabins, 2 bathrooms and beach club

BOAT SPECIFIC SPECIFICATION

LAYOUT (CONTINUED)

- Saloon bar with 2 stools in place of sideboard, includes fridge, icemaker, storage and sink
- Prepared for retrofit for day head (plumbing and drainage) in sky lounge, spa bath on foredeck and tender crane on flybridge
- Additional electric navigators chair in wheel house.
- Additional sound proofing throughout

NAVIGATION

- Additional Raymarine Axiom 2XL 19" multifunction display at helm
- Additional Raymarine Cyclone radar, 55w pedestal with 4" open array scanner
- Raymarine Cyclone pro radar , 110w pedestal with 6" open array scanner
- European version plotter
- Raymarine AIS Class B transponder interfaced with chart plotters
- International VHF

UPHOLSTERY

- Reticulated foam to all exterior fixed seating covers (grey)
- Cockpit privacy screen
- Mooring package with leather fender saddles
- Foredeck sun awning with carbon fibre pole (anthracite grey mesh).
- Electric flybridge sun awning with carbon fibre poles (anthracite grey mesh)

SEA DELIVERY

- Fill with fuel (13,818 litres)
- Compass adjuster to swing main steering compass
- 5 litre container of engine oil
- Eco works cleaning kit.
- Mosquito screens for port lights

STANDARD SPECIFICATION

DECK FITTINGS

- Teak-laid transom platform, transom steps, cockpit deck, stairway to flybridge, flybridge aft sun deck and foredeck lounge walkthrough areas
- Reversible hydraulic anchor winches with bridge controls
- Anchor pockets with automatic anchor launch and retrieve
- Twin anchor system incorporating two 125kg Galvanised Kedge anchor with 100m of 14mm galvanised chain
- Deck chain stoppers (2)
- Four mooring bollards forward
- Four mooring bollards aft
- Twin electric sternline mooring winches
- Deck hatch access to chain, Bosuns and storage locker
- Freshwater deck/anchor wash (with both fore and aft deck outlets)
- Stainless steel bow and stern fairleads
- Stainless-steel spring cleats (1 pair)
- Stainless-steel aft spring cleats (1 pair)
- Stainless-steel foredeck guard rails
- Stainless steel flybridge handrails
- Stainless gates to restrict access to the foredeck area
- Foredeck escape hatch
- Twin coachroof lockers for storage of fenders, ropes and cushions
- PVC rubbing band with stainless-steel insert
- LED deck level lighting
- Full set of IMCO navigation lights
- Riding light
- Twin beam searchlight with remote controls
- Loudhailer

- Stern docking lights
- Twin electric horns
- Fuel and water fillers

AFT COCKPIT AND BATHING PLATFORM

- Self-draining
- Upholstered U-shaped seating with storage below
- Teak dining table with removable central leaf section paired with 2 dining chairs
- LED overhead and deck level lighting
- Stainless-steel handrails
- Second station controls portside including thruster controls and emergency engine stop
- Remote control 5m telescopic passarelle with folding handrails
- Watertight hinged door giving access from transom into garage / optional beach club area
- Engine room to cockpit escape hatch
- Garage(to take Jetski upto 3.05m) with electro-hydraulic door and manual jet ski launch system with additional storage for Seabobs (2 max)
- Rope storage locker
- Wash hand basin with mixer tap
- Locker containing remote fuel cocks, manual bilge pump with valve chest and manual controls for automatic fire extinguishers
- Integral stairway to flybridge with teak step treads
- Twin transom gates leading to bathing platform
- Electro-hydraulic teak laid transformer bathing platform (1000Kg SWL)

- Retractable bathing ladder (manual) in side of bathing platform
- Stainless steel keyway plates and slider system for later fitting of tender on bathing platform
- Hot and cold transom shower
- Three phase shore inlet (380v-415v / 42KVa @50Hz) with Glendinning cablemaster (15m/50ft) and a single phase shore power inlet (220-240v / 15KVa @ 50Hz. Both shore supports with isolation transformers. (US Spec single phase 2 x 100A)
- Cockpit cover

HELM

- Enclosed pilot house with central leather upholstered electric seat with fore, aft and height adjustment
- U-shaped companion seating to port with table
- Sliding doors to fully enclose or open helm to skylounge area
- Instrument console with LED display incorporating engine instruments, CCTV, fuel gauges, alarms and rudder position indicator
- Helm position instrument and controls console
 - power-assisted electro-hydraulic steering
 - adjustable steering wheel
 - high-speed magnetic compass
 - electronic engine controls
 - trim tab controls with indicators
 - bow thruster control
 - hydraulic anchor winch remote control
 - colour radar (with scanner) and GPS/

- chart plotter (twin 19" displays)
 - autopilot
 - speed and distance log
 - echo sounder with alarm
 - VHF with DSC R/T with intercom
 - remote control dual searchlight
 - horn button (to operate twin electric horns)
 - audible and visual alarm for bilge pumps
 - engine room fire extinguisher warning system
- Intercom to galley and crew area
- Automatic fog horn with loudhailer
- Chart storage
- Drink holders
- Toughened glass screen (clear for night vision) with windscreen de-mist system
- Windscreen wipers with freshwater windscreen wash
- Black mesh sunscreens
- Bilge pump controls with visual pump running warnings
- 24v and 240v electrical control panel
- Riding light, helm and navigation light control switches
- USB connection points (2)
- Dimmable LED overhead, concealed(24V) and night lighting with scene selection
- Watertight pantograph door giving direct access from starboard side deck
- Electric drop window to port
- Timber laid deck - V groove planked

DETAILED SPECIFICATION

SKY LOUNGE

- L-shaped sofa, coffee table and Otto Pouf
- 55" 4K UHD LED TV on rise and fall
- UHD DVD Blu-ray system with Naim audio system with speakers (2)
- Sideboard with fridge and storage
- Access stairway to main deck
- Stainless steel opening glass doors to aft deck area
- USB connection points (2)
- Dimmable LED overhead and concealed lighting (24v) with scene selection
- Tinted panoramic toughened side windows
- Glazed roof panels with powered blinds and wooden slat feature
- Electric blinds to all side windows
- Timber flooring - V groove planked

FLYBRIDGE AND FOREDECK

- Foredeck area with U-shaped seating and storage locker
- Foredeck to incorporate glazed panels to allow light through to galley /dINETTE below
- Sunbathing area with integrated adjustable teak headrests and storage, converts to aft facing U-shaped seating area.
- Flybridge aft deck area with free standing furniture
- Dining table with chairs to accommodate 8 persons (10 for 5 cabin layout)
- Naim Uniti Atom audio system with waterproof speakers (2) to aft end of flybridge
- Clear view hatch to aft cockpit
- Access stairway to aft cockpit
- Stainless-steel handrails with glass

balustrade to aft and sides of flybridge deck

- Port storage/servery unit
- Port storage/servery unit with sink and tap
- Liferaft stowage lockers
- LED overhead and deck level lighting
- Radar mast
- Twin matching whip aerials for VHF R/T and radio
- Covers to exterior furniture where appropriate

DECK SALOON

- Large sofa to port with storage below
- Sofa to starboard with storage below
- Coffee table
- Bruton pouf
- 65" 4K UHD LED TV on rise and fall.
- DVD Blu-ray system and Naim audio system with speakers (4)
- Servery unit with integrated drinks refrigerator, bottle storage and icemaker
- Occasional coffee table with four armchairs to starboard
- Full height glazing port and starboard in way of servery unit/bar and starboard free standing seating areas
- Panoramic tinted toughened glass windows port and starboard
- Triple stainless steel framed cockpit doors
- Watertight side hinge door to starboard side deck
- Access stairway to lower accommodation
- Access stairway to skylounge
- Dimmable LED overhead and concealed lighting with scene selection
- 220/240v outlets (4)

- USB connection points (4)
- Electric roller blinds to outboard windows
- Electric curtains on wave track to aft patio doors
- Fitted carpet

GALLEY

- Open layout / Country kitchen with forward dining area
- Powered up/down privacy screen to aft galley unit and manual sliding door to port
- Galley and island unit worktop in choice of Granite or Quartz
- 5 zone induction hob
- 900 wide conventional oven
- Microwave oven with grill
- Twin full height refrigeration units with deep freeze drawers
- Ice maker
- Island unit/breakfast bar with twin stainless steel sinks, 12 place dishwasher, storage and space for optional drawer fridge
- Barstools (3)
- Waste bin
- High and low level storage cupboards and drawers
- Extractor fan
- Cutlery and crockery storage
- Space for optional wine cooler
- Access to deck saloon
- Watertight pantograph access door to port side deck (in forward saloon)
- 220/240v power outlets (4)
- Dimmable LED overhead and concealed lighting with scene selection
- Electric blinds to windows

- Timber flooring - V groove planked

FORWARD DINING AREA

- Dining table with aft facing dinette seating and dining chairs (5)
- Port sideboard bench unit with upholstered top
- Sideboard units (2) with crockery, glassware and general storage
- Entertainment unit with Naim audio system and speakers (2)
- 220/240v power outlets (2)
- USB connection points (2)
- Dimmable LED overhead and concealed lighting (24V) with scene selection
- Panoramic tinted toughened glass windows port and starboard
- Powered blind to forward glazing
- Electric roller blinds to windows
- Timber flooring - V groove planked

DAY TOILET

- Electric freshwater toilet
- Wash hand basin and worktop in thermoformed Solid Surface
- Storage cupboard
- Manual tension venetian blind
- Marble/granite/quartz floor

DETAILED SPECIFICATION

ACCOMMODATION

- All cabins and bathrooms feature opening portholes and air conditioning
- All cabins feature 220/240v powerpoints
- All en-suites feature 240v shaver points

MASTER STATEROOM

- Large double bed with bedside tables and drawers below
- Dressing area with full length mirror, hanging, shelf and drawer storage
- Built-in safe
- Starboard dressing table with integrated mirror, chair, storage drawers and cupboards
- Portside sofa with storage below and coffee table
- 55" 4K UHD LED TV
- UHD DVD Bluray system connected to Naim audio system with speakers (2) and subwoofer
- Panoramic windows including opening portholes
- Electric roman blinds and manual sheer roller blinds to hull windows
- Dimmable LED overhead and concealed 24v lighting with scene selection
- Wall lights
- Telephone/intercom
- 220/240v outlets (4)
- USB connection points (4)
- Fitted carpet

EN-SUITE BATHROOM

- Twin washbasins and worktop in thermoformed Solid Surface
- Mirror
- Storage lockers
- Separate compartment with toilet and option of bidet
- Shower compartment with automatic pump out
- Extractor fan
- Heated towel rail
- Window with opening porthole
- Manual tension venetian blind
- LED overhead and concealed lighting (24V)
- Bathroom accessories
- Marble/Granite/Quartz to floor and specified bulkheads

FORWARD STATEROOM

- Large double bed with drawers below
- Walk-in wardrobe with shelves
- Dressing table with stool
- Mirror
- Storage lockers
- 40" UHD LED TV
- UHD DVD Bluray system connected to Naim Atom audio system with ceiling mounted speakers (2)
- Windows with opening portholes
- Electric roman blinds
- Deck hatch
- LED overhead and concealed lighting (24V) with scene selection
- Wall lights (2)
- 220/240v outlets (2)

- USB Connection points (2)
- Fitted carpet

EN-SUITE BATHROOM

- Washbasin and worktop in thermoformed Solid Surface
- Mirror
- Storage lockers
- Shower compartment with automatic pump out
- Extractor fan
- Window with opening porthole
- Manual tension venetian blind
- LED overhead and concealed lighting (24V)
- Bathroom accessories
- Marble/Granite/Quartz flooring

STARBOARD GUEST CABIN

- Two single beds with drawers below (with option of double bed conversion)
- Bedside table
- Wardrobe with shelves
- Mirror
- Storage lockers
- Window with opening portholes
- Electric roman blinds
- Dimmable LED overhead and concealed 24v lighting with scene selection
- Individual berth lights
- 220/240v outlets (2)
- USB connection point (2)
- Fitted carpet

EN-SUITE BATHROOM

- Washbasin and worktop in thermoformed Solid Surface
- Mirror
- Storage lockers
- Shower compartment with automatic pump out
- Extractor fan
- Windows with opening porthole
- Manual tension venetian blind
- LED overhead and concealed lighting (24V)
- Bathroom accessories
- Marble/Granite/Quartz flooring

PORT GUEST CABIN

- Two single beds with drawers below (with option of double bed conversion)
- Bedside table
- Wardrobe with shelves
- Mirror
- Storage lockers
- Window with opening portholes
- Electric roman blinds
- Dimmable LED overhead and concealed 24v lighting with scene selection
- Individual berth lights
- 220/240v outlets (2)
- USB connection point (2)
- Fitted carpet

DETAILED SPECIFICATION

EN-SUITE BATHROOM

- Washbasin and worktop in thermoformed Solid Surface
- Mirror
- Storage lockers
- Shower compartment with automatic pump out
- Extractor fan
- Windows with opening porthole
- Manual tension venetian blind
- LED overhead and concealed lighting (24V)
- Bathroom accessories
- Marble/Granite/Quartz flooring

LOBBY / PASSAGEWAY AREA

- Linen cupboard below companionway stairs
- Space for optional washer/dryer below companionway stairs
- Dimmable LED overhead and concealed 24v lighting with scene selection
- Fitted carpet

CREW QUATERS

(N.B. All lower crew furniture is in white finish, with Carrara White (gloss finish) solid surface bathroom vanity unit tops and Carrara White (satin finish) bathroom floors)

CREW CABIN AFT (Captain's cabin)

- Single bed with storage below
- Wardrobe with shelf

- Mirror
- Storage lockers
- Opening porthole and venetian blind
- LED overhead lighting (24V)
- Individual berth light
- 220/240v outlets (2)
- USB Connection points (2)
- Fitted carpet
- Optional second bunk

CREW CABIN FWD

- Two bunk beds with storage below
- Wardrobe with shelf
- Mirror
- Storage lockers
- Opening porthole and venetian blind
- LED overhead lighting (24V)
- Individual berth lights
- 220/240v outlets (2)
- USB Connection points (2)
- Fitted carpet

CREW BATHROOM

- Washbasin with Carrara White (gloss finish) solid surface worktop
- Mirror
- Storage lockers
- Shower compartment with automatic pump out
- Extractor fan
- Porthole with venetian blind
- LED overhead lighting (24V)
- Bathroom accessories
- Solid surface flooring in Carrara white (satin finish)

CREW AREA

- Access from transom door and port side deck
- Access to engine room
- Storage space, cupboards and lockers
- Dinette with table
- Crew mess with Microwave with grill, sink, refrigerator and waste bin
- Solid surface worktop
- Washing machine and separate tumble dryer
- LED overhead lighting (24V)
- Non slip safety flooring

POWER AND DRIVE SYSTEMS

- Engine room soundproofed
- High volume air intakes
- Engine room extractor fan with electronic Time delay
- Engine exhaust silencers and water-cooled exhausts
- Engine beds integrally moulded with hull for strength and vibration absorption
- Forward and aft engine room bulkheads integrally bonded
- Engines flexibly mounted
- Automatic fire extinguisher with remote override control
- Automatic and manual bilge pumps
- Propeller shafts in Marinemet
- 5-bladed propellers in nickel aluminium bronze
- High speed balanced rudders
- Cathodic protection for sterngear
- Sterngear, engines, fuel tank fillers, etc all Electrically bonded

- Engine room lighting
- Engine room access from transom and port side deck via crew area and from cockpit deck
- Power-assisted electro-hydraulic steering system
- Trim tabs with indicators
- Electronic engine and gear shift controls
- Bow thruster with dual-station controls
- Fresh water supply point in engine room
- Dripless self aligning shaft seals

ELECTRICAL SYSTEMS

24 Volt:

- 4 x heavy duty batteries for engine starting
- 6 x heavy duty auxiliary batteries
- Battery link facility with remote control at helm position
- Both battery banks are charged using a voltage sensitive relay that parallels both battery banks when a charging source is present
- 2 x 100-amp 24v float battery chargers
- Remote battery isolator control switches at main switch panel position
- Circuit breakers on all circuits
- 24v to 12v converters for certain navigation and radio circuits
- 24v to 240v/50Hz inverter for saloon a/v, galley fridge and telephone system
- Galvanic isolation system

220/240 Volt:

- European specification: 2 x 40kW @ 50Hz diesel generators in own sound

DETAILED SPECIFICATION

- shields, water cooled and with specially silenced exhaust systems and with remote operation from main control panel
- USA specification: 2 x 40kW @ 60Hz diesel generators in own sound shields, water cooled and with specially silenced exhaust systems and with remote operation from main control panel
- Three phase shore inlet (380v-415v / 42KVa @50Hz) with Glendinning cablemaster (15m/50ft) and a single phase shore power inlet (220-240v / 15KVa @ 50Hz. Both shore supports with isolation transformers. (US Spec single phase 2 x 100A)
- Shore power/generator change over control operated from main control panel
- Polarity check system
- Earth leakage safety trip, circuit breakers on all circuits
- Power points (240v) in all cabins and living areas, helm position and galley
- 240v shaver points in washrooms
- 3kW immersion heater for fresh water
- CCTV system with camera in aft cockpit and two fixed cameras in engine room

FUEL SYSTEM

- Main fuel tank with fuel polishing transfer system to day tank giving a total 13400 litres of fuel capacity (Forward fuel bunker tank 4,730l and Main fuel bunker tank 7,730l plus Day fuel tank 940l)
- Fuel fillers to port and starboard
- High capacity duplex fuel filters/water traps with integral changeover valves and water sensors connected to alarms at helm

position

- Remote fuel isolation controls in cockpit locker for main engines and generators
- Fuel gauges at helm position

WATER SYSTEM

- Water tanks giving 5 litres capacity plus 205 litres hot water calorifier
- Automatic water pump with filter
- Water level gauge
- Deck filler
- Pump circuit breaker at main switch panel
- Electric freshwater toilet system linked to 720 litres holding tank, content gauge and low noise electric overboard discharge, with macerator backup system as well as dockside discharge system

BILGE PUMPS

- Automatic/manual override electric bilge pumps in engine room, rudder area and forward accommodation
- High capacity manual bilge system with suction points in the same areas
- Electric bilge pumps have controls and warning lights with audible alarm at helm position

EXTINGUISHERS / FIRE CONTROL SYSTEMS

- Automatic engine room fire extinguisher system (with manual override) and warning system at helm position providing automatic shutdown of engines, generators

and ventilation fans

- Automatically operated engine room air shut-off system
- Hand operated fire extinguishers in all guest cabins, galley, crew quarters and flybridge

OTHER STANDARD EQUIPMENT

- Ensign staff
- Fenders (8)
- Mooring warps (4)
- First Aid kit
- Set of towels (8 large, 8 hand), NB : 10 sets with 5 cabin layout
- Bed cover supplied to all cabins (except crew cabin)
- Complete set of Lucrezia crystal glassware (8 settings consisting of tumbler, highball and wine glasses) (10 settings with 5 cabin layout)
- Set of Sous Le Soleil crockery (8 settings consisting of plate, cake plate, dessert plate, bowl, cup & saucer) (10 settings with 5 cabin layout)
- Set of stainless steel cutlery (8 settings of David Mellor "Paris" cutlery 7 pieces) (10 settings with 5 cabin layout)
- Tool kit
- Boat hook
- Owner's manual and engine manual
- Ship's document case

FINISHES

- Teak-laid decks to all external deck areas (including flybridge)
- V grooved planked timber floor to galley, skylounge and wheelhouse
- Furniture in choice of Alba oak, Rovere Oak or Walnut with satin or gloss lacquer finishes (see options form for details)
- Marble, quartz or granite floors in all bathroom suites in guest accommodation (including day head)
- Thermoformed Solid Surface wash hand basin counter tops in all bathroom suites and day head
- Galley worktop in granite or quartz
- Choice of high quality carpets and fabrics from extensive range
- Curtains, blinds or sunscreens to all windows and portholes
- Crew cabins have fitted carpet, crew bathroom have Solid Surface floors and counter tops
- Non slip safety flooring to crew mess and passageway

FOR FURTHER INFORMATION

PLEASE CONTACT:

Your respective sales manager

Information disclaimer:

The details contained in this document were correct at the time of publication. Princess Yachts Limited reserves the right to modify or change the specification.

