



75 MOTOR YACHT

75 MOTOR YACHT

The ingenious design of the eagerly anticipated 75 Motor Yacht offers efficient, agile cruising, enabling you to plane at lower speeds. Her deck layout provides you with a variety of options to entertain or relax including a walkthrough foredeck with U-shaped seating and sunbathing area. She's also sociable whilst underway with L-shaped seating either side of the upper helm. The flybridge also offers the option of a spa bath or space aft to fit a crane and store a tender. Her elegant exterior conceals a voluminous interior. Natural light flows in to her main deck through extended window lines and a unique full-height window on the port side to make the free standing dining area a spectacular place to entertain. Forward on the lower deck, all three guest cabins are en suite whilst a dedicated staircase leads to the owner's stateroom amidships via a private lobby area.

La conception ingénieuse du nouveau 75 Motor Yacht en fait un modèle maniable et efficace, qui vous permet d'atteindre le planing à des vitesses plus faibles. Avec tout un choix d'options de distractions ou de détente, y compris un pont avant à accès direct, équipé de sièges en U et de bains de soleil, il est l'endroit idéal lorsque le bateau est amarré à la poupe dans une marina. Il est également convivial en mer, avec ses sièges en L disposés de chaque côté du poste de pilotage sur le flybridge. Le flybridge offre aussi l'option d'un jacuzzi, l'espace arrière permettant de disposer une grue et de ranger une annexe. Son élégance extérieure cache un intérieur aux volumes importants. La lumière naturelle pénètre à l'intérieur du pont principal par la longue baie vitrée, et une fenêtre originale sur toute la hauteur côté bâbord font du coin salle à manger séparé un lieu de réception spectaculaire. À l'avant sur le pont inférieur, les trois cabines invités ont chacune leur salle de bains, alors qu'un escalier exclusif mène à la cabine du propriétaire, assortie d'un salon privatif.

Das raffinierte Design der neuen 75 Motoryacht bietet Ihnen effizientes und bewegliches Fahren und macht damit auch Gleitfahrten bei niedrigerer Geschwindigkeit möglich. Die 75 Motoryacht bietet verschiedene Unterhaltungs- oder Entspannungsmöglichkeiten, zu denen auch ein durchgängiges Vorderdeck mit in U-Form angeordneten Sitzen und ein Bereich zum Sonnenbaden gehören, und ist der perfekte Platz, wenn sie fest vertäut in einem Yachthafen liegt. Wenn die Sitze in L-Form auf jeder Seite der hinteren Flybridge angeordnet werden, ist die 75 Motoryacht zudem auch noch sehr gemütlich. Die Flybridge bietet auch ausreichend Platz für einen Whirlpool mit geräumigem Achterschiff, wo auch ein Kran und ein Beiboot untergebracht werden können. Hinter dem eleganten Äußeren der Motoryacht verbirgt sich ein geräumiger Innenbereich. Über die verlängerten Fensterreihen und das einmalige, über die gesamte Höhe verlaufende backbordseitige Fenster fällt natürliches Licht in das Hauptdeck; der frei in den Raum platzierte Essbereich bietet Ihnen damit Essvergnügen in einem spektakulären Setting. Die drei Gästekabinen auf dem Unterdeck vorne sind alle Ensuite-Kabinen; eine separate Treppe führt über einen privaten Vorraum zu der Kabine des Eigners.

L'innovativo design del nuovo 75 Motor Yacht assicura una navigazione agile ed efficiente che consente di planare a basse velocità. Con una varietà di opzioni di intrattenimento o per il relax tra cui passeggiate laterali con sedute a U e area prendisole, è l'imbarcazione perfetta da ormeggiare a poppa in un porto turistico. E grazie alle sedute a L ad entrambi i lati del flybridge, intrattenersi durante la crociera sarà un piacere. Il flybridge offre anche la possibilità di avere una vasca idromassaggio e dello spazio a poppa per montare una gru e alloggiare un tender. I suoi esterni eleganti nascondono interni molto spaziosi. La luce naturale pervade il ponte principale attraverso linee estese di finestre mentre sul fianco sinistro, una finestra unica ad altezza integrale rende la zona pranzo indipendente un luogo spettacolare per intrattenere gli ospiti. Passando al ponte inferiore, le tre cabine ospiti sono dotate di bagno privato e alcuni gradini poi portano alla suite armatoriale attraverso una zona lobby privata.

Гениальный дизайн и совершенство новейшей 75 Motor Yacht обеспечат для Вас эффективное и гибкое управление, позволяющее летать над волнами даже на низких скоростях. Эта яхта создана дарить Вам истинное наслаждение каждый день. Зоны для принятия солнечных ванн в носовой и кормовой частях яхты и U-образная диванная зона впереди. Невероятно большое пространство на флайбридже позволяет полноценно отдыхать в компании из 10 человек, здесь же предусмотрено место для установки джакузи или тендера. Под элегантным корпусом этой яхты скрывается не менее изысканный интерьер. Благодаря панорамному остеклению и уникальным окнам от потолка до пола по левому борту главная палуба с обеденной зоной превращаются в идеальное место для отдыха и наслаждения пейзажами в жаркую погоду. На нижней палубе располагаются четыре гостевые каюты с персональными ванными комнатами. Отдельная лестница из салона ведёт через личный холл в роскошную и просторную мастер-каюту.

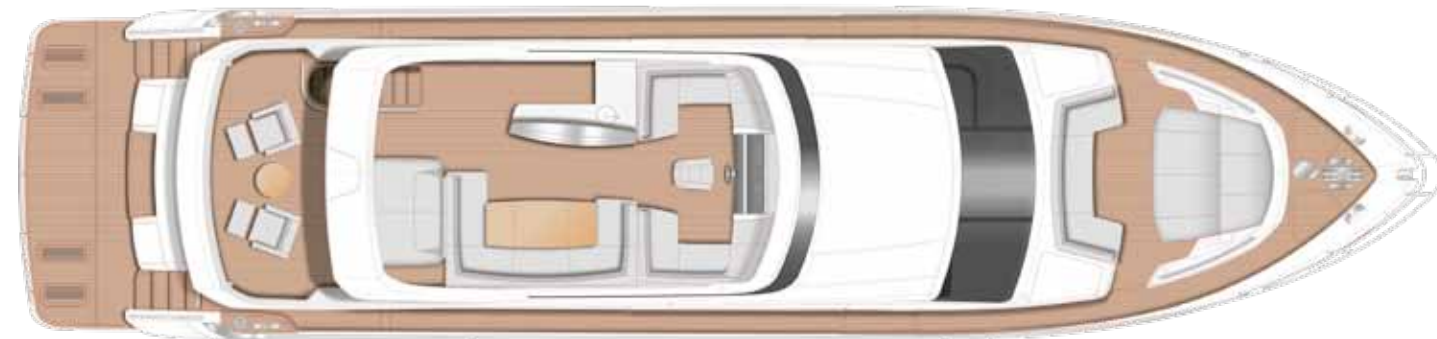




75 MOTOR YACHT

75 MOTOR YACHT

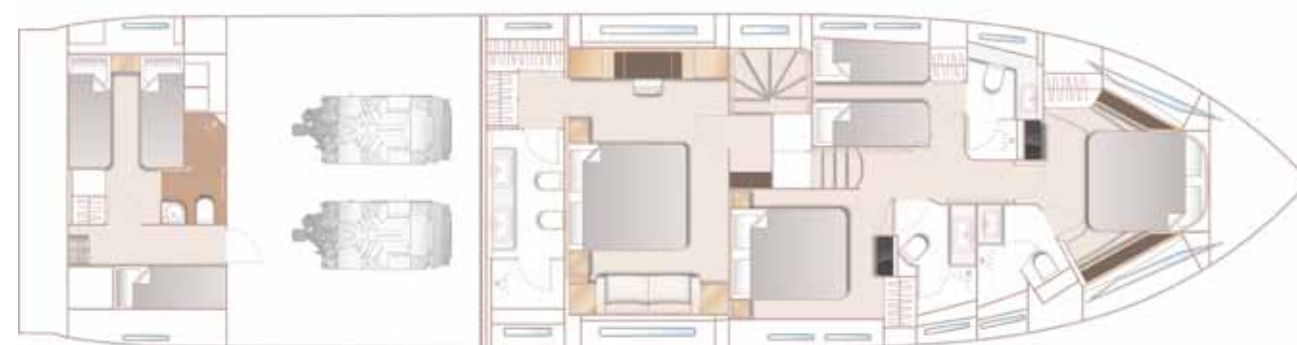
ENGLISH



FLYBRIDGE



MAIN DECK



LOWER DECK

PRINCIPAL DIMENSIONS

Length overall (incl. pulpit)	78ft 8in (23.97m)
Length overall (excl. pulpit)	74ft 3in (22.64m)
Beam	18ft 11in (5.76m)
Draft	5ft 8in (1.76m)
Displacement approx.	47,700kg (105,160lbs)*
Fuel capacity	1,320 gal/1,585 US gal/6,000l
Water capacity (incl. calorifier)	297 gal/356 US gal/1,350l

DECK FITTINGS

- Teak-laid transom platform, cockpit deck, flybridge, flybridge stairway and stairs to side decks
- Self-stowing 50kg/110lbs Delta anchor with 100m chain
- Reversible electric anchor winch with foredeck, helm position and flybridge controls
- Stainless steel cleats, fairleads and handrails
- Twin electric-powered sternline mooring winches
- Freshwater deck/anchor wash
- Foredeck seating and sunbathing area
- Storage lockers for rope, fenders and foredeck sunbed cushions
- Telephone connection point
- Stern docking lights
- LED deck level lighting
- Transom doors giving direct access to crew cabin and utility area

COCKPIT

- U-shaped seating and teak folding table
- Twin transom gates leading to bathing platform with electro-hydraulic raise/lower mechanism, foldaway swimming ladder, hot and cold shower
- Transom seat in teak with storage locker
- Lockable gas strut assisted hatch to engine room
- Wash handbasin
- Lifteraft stowage locker
- Remote control 4m telescopic passerelle with folding handrail
- Cockpit cover

FLYBRIDGE

- Helm position with powered raise/lower console, repeat navigation equipment including radar/chartplotter and engine instrumentation
- U-shaped seating area with folding teak table
- Twin forward J-shaped seating
- Sunpad aft with storage below (option for built-in spa bath)
- Radio/MP3 with waterproof speakers
- Wetbar including sink with electric barbecue and drawer refrigerator
- Optional electric crane (safe working load 450kg)

LOWER HELM POSITION

- Twin helm seats with electric fore and aft adjustment for helmsman
- L-shaped seat with electric drop window opposite helm area
- Helmsman's door to side deck
- Full engine instrumentation including fuel gauges, exhaust temperature, fuel contamination alarms, rudder position indicator
- Navigation system including colour radar, GPS and chartplotter (2 displays), VHF/RT, speed and distance log, echo sounder with alarm, autopilot and high speed magnetic compass
- Controls for bow thruster, windscreen wipers, bilge pump and trim tabs (with indicator)

- Intercom to flybridge
- Automatic foghorn with loudhailer
- Chart table with light and chart stowage
- 24v and 240v control panel
- Red night lighting
- Toughened glass screen (clear for night vision)

DECK SALOON

- U-shaped sofa and coffee table
- Two-seater sofa
- Entertainment centre incorporating 50" LED TV on electric raise/lower mechanism and DVD, radio/MP3 system with surround sound system
- Sideboard unit with bottle and glass storage and refrigerator
- Dining area (for 8 people) with full-height panoramic window

GALLEY

- 4-zone ceramic hob
- Combination microwave/conventional oven with grill
- Twin stainless steel sinks with mixer tap
- Full-height refrigerator/deep freezer
- Icemaker
- Dishwasher
- Storage lockers, cupboards and drawers
- Electrically operated sliding glass partition from aft saloon

ACCOMMODATION

- All cabins and bathrooms feature opening portholes and air conditioning outlets
- All cabins feature 220/240v power points
- All mattresses pocket sprung
- All bathrooms feature full shower stalls, electric freshwater toilets, extractor fan and 240v shaver points

OWNER'S STATEROOM

- Large double bed with drawers below
- Dressing area with wardrobes with hanging and drawer storage
- Dressing table with chair
- Sofa
- Built-in safe
- 40" LED TV and DVD, radio/MP3 system with surround sound
- En suite bathroom
- Dedicated access with lobby area
- Combination washer/dryer fitted in lobby area

FORWARD GUEST CABIN

- Large double bed with drawers below
- Large wardrobe with shelves
- Dressing table with stool
- Deck hatch
- Stereo radio/MP3
- En suite bathroom

ENGINE OPTIONS - DIESEL

Twin Caterpillar C32 A (2 x 1622mhp)	Speed range: 31-33 knots†
Twin Caterpillar C32 A (2 x 1723mhp)	Speed range: 32-34 knots†
Twin MAN V12 1800 (2 x 1800mhp)	Speed range: 34-36 knots†

PORT GUEST CABIN

- Two single beds with drawers below (with the option of powered conversion to double)
- Wardrobe with shelves
- Bedside table with storage
- Storage lockers
- En suite bathroom

STARBOARD GUEST CABIN

- Large double bed with drawers below (with the option of powered sliding berths)
- Wardrobe with shelves
- Dressing table with stool
- Bedside tables with storage
- Storage lockers
- En suite bathroom with day access

CREW CABIN

- Crew cabin with two single berths, wardrobe and storage lockers
- Bathroom with separate stall shower, electric freshwater toilet and washbasin
- Storage/utility area (optional additional crew cabin)
- Access to engine room

INTERIOR FINISH

- Furniture in Rovere Oak with satin or high gloss finish. American Walnut or Alba Oak available as an option.
- Avonite worktops and tiled floors in all guest bathrooms
- Galley worktops in choice of granite or quartz
- Choice of high quality carpet and upholstery fabric from extensive range
- Curtains, blinds or sunscreens to all windows and portholes
- Timber-laid galley and helm floors

POWER AND DRIVE SYSTEMS

- 5 bladed propellers in nickel aluminium bronze
- Bow thruster (240kgf/529lbf)
- Power-assisted electro-hydraulic steering system with hydraulic back-up
- Electronic engine and gear shift control systems
- Dripless shaft seals
- Engine room extractor fan with electronic time delay

ELECTRICAL SYSTEMS

- 24 Volt:
- 4 x heavy duty batteries for engine starting
- 6 x heavy duty auxiliary batteries
- 2 x 60 amp battery charger charges both banks of batteries via an automatic switch charging system
- Remote battery master switches with control switch at main panel
- LED lighting throughout

220/240 Volt:

- 22.5kW diesel generator in own sound shield with water cooled specially silenced exhaust
- 2 x 63 amp shore support inlet
- Earth leakage safety trip, polarity check system, circuit breakers on all circuits
- Power points in all areas

FUEL SYSTEM

- Twin fuel tanks (in NS8 marine grade alloy) with interconnection system giving 1320 gal/1585 US gal/6000l capacity
- Fuel fillers on port and starboard side decks
- High capacity duplex fuel filters/water traps with audible and visual fuel contamination warning system
- Remote fuel cocks in cockpit locker
- Fuel gauges at lower and upper helm positions

WATER SYSTEM

- 253 gal/304 US gal/1150l plus 44 gal/52 US gal/200l hot water calorifier, heated by engines and 240v immersion heater
- Water level gauge
- Electric freshwater WC system with 99 gal/119 US gal/450l holding tank

AIR CONDITIONING

- 126,000Btu chilled water system with outlets in all accommodation areas and incorporating reverse cycle heating with linked windscreen demist system. Suitable for tropical conditions (40°C)

FIRE EXTINGUISHERS

- Automatic/manual override fire extinguishers in engine room with warning system at both helm positions and incorporating engine air vent closure system
- Hand-operated fire extinguishers in all cabins, galley, utility, crew and lower helm (8)
- Separate automatic extinguisher in electrical space

BILGE PUMPS

- Automatic electric bilge pumps (7)
- High capacity manual bilge pump with valve system and suction points in same areas

OTHER ITEMS SUPPLIED AS STANDARD

- Set of cutlery, crockery and glasses (8)
- Set of towels (8 large, 8 small)
- Ensign staff
- Fenders (8) and warps (4)
- First aid kit
- Set of manuals

