

S

CLASS



EXPERIENCE THE
EXCEPTIONAL

Your yacht is an extension of yourself. A statement of your lifestyle. She needs to deliver unforgettable experiences for you, your family and friends. Every Princess yacht is designed with our forward-thinking mentality and crafted with meticulous attention to detail. So whether you're dashing across the water or moored in your favourite bay, you will recognise the difference our design and details make, inside and out.

Experience the exceptional.



CRAFTED IN PLYMOUTH

Perched on the edge of the English Channel lies the city of Plymouth, where we established our home in 1965. Today Princess shipyards cover an area of over 1.1 million square feet, an area rich in British maritime heritage. In fact, South Yard, where our X Class Super Flybridge yachts are constructed, is a former naval yard dating back to the 17th century. From the outset, our goal has been to meticulously sculpt our yachts around our owners' enjoyment of them. Such dedication and attention to detail resonates deeply with our Plymouth craftspeople.

Over 3,000 people, each possessing a mastery of their skill, fastidiously realise this vision in our shipyards. Through a culture of innovation, our yachts are not only some of the most technically-advanced in the world but also the most beautifully realised.



1965

Our story has humble beginnings. In 1965 David King and two friends fitted out their first boat in an old fertiliser store in Plymouth, England. They named her 'Project 31'. Originally destined for charter, the first Project 31 was purchased by a keen boater and two more were built shortly afterwards, marking the beginning of what is today one of the world's leading shipyards. In fact over 130 Project 31 yachts were produced and sold between 1966 and 1969.



TODAY

Over 17,000 boats later, the S62 and S66 are the very latest additions to our S Class range. Delivering captivating performance and luxurious beauty, they are proud symbols of our experience and expertise – at the zenith of luxury yacht manufacturing. Finished to high specifications throughout, the new S62 and S66 are everything we've learned, distilled into the finest on water experience.





S CLASS

Cool and captivating. Balanced. Distinctively luxurious and spaciousness throughout, the extensive cockpits, garages and aft sunpads entice you to enjoy watersports and the great open air. A sports experience with generous interior accommodation for entertaining, our S Class craft are a haven of relaxation, and exhilaration is on tap, for when you need it.



S 78

Distinctively cool whilst propelling you at speeds up to an exhilarating 39 knots, the S78 is the flagship of the Princess S Class. Her sportbridge inspires relaxation with a range of exclusive furnishings to choose from and seating areas that convert into sun loungers. Unique central access from her hydraulic bathing platform to the cockpit passes between twin sunpads whilst her foredeck features innovative seating with sunpads which can be converted to create additional aft facing seats. The perfect ambience is ensured across her sportbridge, saloon, cockpit and master cabin, where the world class Naim Audio sound system comes installed as standard. Refined and captivating, she's more than everything you would expect from the largest Princess S Class.





Experience traditional craftsmanship reinvented throughout her integrated interior. Ambient lighting plays a supporting role behind furniture, feature panels and through flooring. A cavernous main deck saloon seamlessly connects you to the world outside through full length side windows. Her well-equipped galley surpasses the highest of expectations whilst her dining area delivers a sense of versatile space with an ingenious sliding glass table. Below deck eight guests enjoy four beautifully appointed en suite cabins all bathed in natural light from the S78's elegant and expansive glazing, with a further aft cabin for occasional guests or 2 crew.





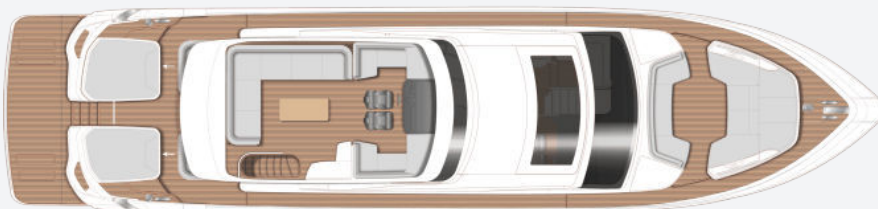
EXPERIENCE THE S78



TAKE A VIRTUAL TOUR OF THE S78



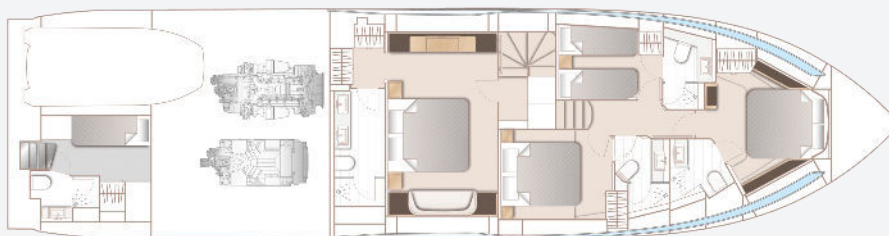
S78
SPECIFICATION



S78 Flybridge



S78 Main Deck



S78 Lower Deck

PRINCIPAL DIMENSIONS

Length overall (incl. pulpit)	80ft 11in (24.66m)
Length overall (excl. pulpit)	78ft 10in (24.03m)
Beam	18ft 11in (5.76m)
Draft	5ft 10in (1.77m)
Displacement approx. (lightship)	49,500kg (109,129lbs)*
Fuel capacity	1,320 gal/1,585 US gal/6,000l
Water capacity (excl. calorifier)	253 gal/304 US gal/1,150l

ENGINES

Twin MAN V12-1900 (2 x 1,900mhp)	Speed range: 37-39 knots [†]
---	--

FULL SPECIFICATION

DECK FITTINGS

- Teak-laid transom platform, cockpit deck, sportbridge, sportbridge stairway, side decks and foredeck walkthrough
- Reversible electric anchor winch with foredeck, main helm and sportbridge controls
- Stemhead roller with automatic anchor launch and retrieve
- Self-stowing 50kg/110lbs Delta anchor with 100m of chain
- Twin electric sternline mooring winches
- Deck hatch access to chain locker
- Bow rope stowage locker
- Freshwater deck/anchor wash (with both fore and aft deck outlets)
- Stainless steel bow and stern fairleads
- Stainless steel bow, stern and spring cleats (2 pairs)
- Stainless steel pulpit and guard rails
- Stainless steel coachroof and sportbridge handrails
- Foredeck escape hatch
- Foredeck U-shaped seating area with cushion in

reticulated foam

- Foredeck sunbathing area with cushions in reticulated foam, integrated adjustable headrests and storage (converts to aft facing U-shaped seating area)
- Twin coachroof lockers for storage of fenders, ropes and cushions
- PVC rubbing band with stainless steel insert
- LED deck level lighting
- Full set of IMCO navigation lights
- Riding light
- Twin beam searchlight with dual station remote controls
- Loudhailer
- Stern docking lights
- Twin electric horns
- Fuel and water fillers
- Telephone connection point

COCKPIT AND BATHING PLATFORM

- Self-draining
- Configurable cockpit seating area with three predefined positions including deck mounting

sockets

- Folding teak dining table that converts to a coffee table
- Twin aft sunbeds with lazarette space below
- LED overhead and deck level lighting
- Illuminated crown logo to transom
- JL Audio M6-650X-L system with waterproof speakers (2)
- Stainless steel handrails
- Garage (to take tender up to 4.45m) with electro-hydraulic door and tender launch system with electric winch
- Remote control 3.6m telescopic passarelle with folding handrails
- Watertight pantograph door giving direct access from bathing platform to crew cabin/engine room
- Lockable gas strut assisted hatch to engine room
- Liferaft stowage locker
- Rope storage lockers

- Locker containing remote fuel cocks, manual bilge pump with valve chest and manual controls for automatic fire extinguishers
- Integral stairway to sportbridge with teak step treads
- Central transom gate leading to bathing platform
- Electro-hydraulic raise/lower teak laid bathing platform (550kg SWL)
- Retractable bathing ladder (manual) in side of hydraulic platform
- Transom steps to access stern from bathing platform when in lowered position
- Dinghy chock system
- Foldable carbon fibre hot and cold transom shower with deck mounting socket and stowage bag.
- 220/240v shore support inlet
- Tonneau canvas cover

SPORTBRIDGE

- Twin adjustable helm seats
- Instrument console with dual station controls and LED display incorporating engine instruments, fuel gauges, alarms and rudder position indicator (see Lower Helm Position)

- Power assisted electro-hydraulic steering with adjustable wheel
- Port and starboard forward-facing L-shaped seating (converts to sunbeds)
- Seating and sunbed cushions in reticulated foam
- L-shaped free standing Roda sofas with coffee table
- Free standing Roda pouffe
- Free standing Roda small circular side table
- Wetbar with barbecue, sink, top loading coolbox, waste bin and storage
- Naim Uniti Atom Audio Unit with JL Audio M6-650X-L waterproof speakers (2)
- Clear view hatch to aft cockpit
- Wind deflector screens
- Stainless steel handrails
- LED deck level lighting
- GRP radar arch
- Twin matching whip aerials for VHF R/T and radio
- Console and seat covers
- Optional bimini with/without optional electro hydraulic operation

HELM POSITION

- Twin Nero Black leather upholstered helm seats with S Class quilting and contrast panelling in Chrome Grey
- Fore and aft adjustment for helmsman.
- Instrument console with LED display incorporating engine instruments, fuel gauges, alarms and rudder position indicator
- Dual station instruments and controls at Sportbridge and Lower Helm Positions:
 - power-assisted electro-hydraulic steering
 - adjustable steering wheel
 - high-speed magnetic compass
 - electronic engine controls
 - trim tab controls with indicators
 - bow thruster control
 - electric anchor winch remote control
 - colour radar (with scanner) and GPS/chartplotter (twin displays at Lower Helm)
 - autopilot
 - speed and distance log
 - echo sounder with alarm
 - VHF with DSC R/T with intercom
 - remote control searchlight
 - horn button
- Intercom to sportbridge

- Automatic fog horn with loudhailer
- Chart storage
- Drinks holders
- Toughened glass screen (clear for night vision) with windscreen de-mist system
- Windscreen wipers with freshwater windscreen wash
- Black mesh windscreen covers
- Skylights with reflecto-glass and sliding blinds (option of powered opening roof)
- Bilge pump controls with visual pump running warnings
- 24v and 240v electrical control panel
- Riding light, helm and navigation light control switches
- USB charging point
- LED overhead lighting (24v) and night lighting
- Pantograph helmsman's door to starboard side deck
- Timber flooring

SALOON

- U-shaped sofa
- Coffee table
- Two-seater chaise to port
- L-shaped sofa opposite helm area

- Electric drop window to port
- Sideboard unit with bottle and glass storage
- Refrigerator
- 55" UHD LED TV on rise and fall
- DVD Blu-ray system with Naim audio system paired with speakers (2) and subwoofer
- Electric roller blinds to all side windows
- Dimmable LED overhead and concealed lighting (24v)
- Access stairway to lower accommodation
- Separate access stairway to owner's stateroom
- Timber flooring with inlaid rug

DINING AREA

- L-shaped sofa
- Glass dining table (sliding mechanism allows table to be slid outboard)
- Stainless steel framed sliding door to cockpit with integrated hinging window aft of galley
- Electric roller blinds to all side windows
- Manual Skysol blinds to aft patio door
- Dimmable LED overhead and concealed lighting (24v)
- Timber flooring

GALLEY

- Galley worktop in choice of granite or quartz
- 4-zone induction hob
- Extractor fan
- Combination microwave/convection oven with grill
- Twin-bowl stainless steel sink with mixer tap
- Chopping board
- Full height refrigerator/deep freeze
- Icemaker
- Dishwasher
- Waste bin
- Drawers and storage cupboards
- Manual Skysol blind to aft opening window
- Electric roller blind to starboard window
- Powered sliding divider screen to forward end of galley
- Dimmable LED overhead and task lighting (24v)
- 220/240v outlets (4)
- Timber flooring

ACCOMMODATION

- All cabins and bathrooms feature opening portholes and air conditioning
- All cabins feature 220/240v power points
- All bathrooms feature electric freshwater toilets

and 240v shaver points

OWNER'S STATEROOM LOBBY

- Access stairway to master stateroom
- Linen cupboard under stairway with washer dryer and space for separate washing machine and tumble dryer
- Panoramic window with venetian blind
- LED overhead and concealed lighting (24v)
- Window with manual tension venetian blind
- Fitted carpet

OWNER'S STATEROOM

- Large double bed with drawers below
- Twin bedside tables
- Dressing area with wardrobes and storage
- Built-in safe
- Dressing table with chair
- Mirror
- Sofa with integrated drawer below
- Storage lockers and drawers
- 40" UHD LED TV
- DVD Blu-ray system with Naim audio system paired with speakers (2) and subwoofer
- Panoramic windows including opening portholes

- Electric venetian blinds
- Dimmable LED overhead and concealed lighting (24v)
- Individual berth lights
- 220/240v outlets (2)
- USB charging point
- Fitted carpet

EN-SUITE BATHROOM

- Twin wash basins with solid surface worktop
- Mirror
- Storage lockers
- Shower compartment with automatic pump out
- Extractor fan
- Window with opening porthole
- Manual tension venetian blind
- LED overhead and concealed lighting (24v)
- Bathroom accessories
- Solid surface flooring

FORWARD STATEROOM

- Large double bed with drawers below
- Wardrobe with shelves
- Dressing table with stool
- Mirror
- Storage lockers

- Naim Uniti Atom audio system, paired with Focal speakers (2)
- Windows with opening portholes
- Electric venetian blinds
- Deck hatch
- LED overhead and concealed lighting (24v)
- Individual berth lights
- 220/240v outlets (2)
- USB charging point
- Fitted carpet

EN-SUITE BATHROOM

- Wash basin with solid surface worktop
- Mirror
- Storage lockers
- Shower compartment with automatic pump out
- Extractor fan
- Window with opening porthole
- Manual tension venetian blind
- LED overhead and concealed lighting (24v)
- Bathroom accessories
- Solid surface flooring

PORT GUEST CABIN

- Two single beds with drawers below (with option of double bed conversion)

- Bedside table
- Wardrobe with shelves
- Mirror
- Storage lockers
- Window with opening portholes
- Electric venetian blind
- LED overhead and concealed lighting (24v)
- Individual berth lights
- 220/240v outlets (2)
- USB charging point
- Fitted carpet

EN-SUITE BATHROOM

- Wash basin with solid surface worktop
- Mirror
- Storage lockers
- Shower compartment with automatic pump out
- Extractor fan
- Window with opening porthole
- Manual tension venetian blind
- LED overhead and concealed lighting (24v)
- Bathroom accessories
- Solid surface flooring

STARBOARD GUEST CABIN

- Large double bed with drawers below (with option of two single beds which slide to form a double as required)
- Twin bedside tables
- Wardrobe with shelves
- Dressing table with stool
- Mirror
- Storage lockers
- Window with opening portholes
- Electric venetian blind
- LED overhead and concealed lighting (24v)
- Individual berth lights
- 220/240v outlets (2)
- USB charging point
- Fitted carpet

EN-SUITE BATHROOM

- Wash basin with solid surface worktop
- Mirror
- Storage lockers
- Shower compartment with automatic pump out
- Extractor fan
- Window with opening porthole
- Manual tension venetian blind
- LED overhead and concealed lighting (24v)

- Bathroom accessories
- Solid surface flooring
- Day access door from passageway

CREW CABIN

- Access from transom door
- Access to engine room
- Two single bunk beds
- Wardrobe with shelf
- Mirror
- Storage lockers
- Microwave
- Storage unit with solid surface worktop and space for optional fridge
- Opening porthole and manual tension blind
- LED overhead lighting (24v)
- Individual berth lights
- 220/240v outlets (2)
- USB charging point
- Non-slip safety flooring

EN-SUITE BATHROOM

- Wash basin with solid surface worktop
- Mirror
- Storage lockers
- Shower compartment with automatic pump out

- Extractor fan
- LED overhead lighting (24v)
- Bathroom accessories
- Non-slip flooring

POWER AND DRIVE SYSTEMS

- Engine room soundproofed
- High volume air intakes
- Engine room extractor fan with electronic time delay
- Engine exhaust silencers and water-cooled exhausts
- Engine beds integrally moulded with hull for strength and vibration absorption
- Forward and aft engine room bulkheads integrally bonded
- Engines flexibly mounted
- Automatic fire extinguisher with remote override control
- Automatic and manual bilge pumps
- Propeller shafts in Marinemet
- 5-bladed propellers in nickel aluminium bronze
- High speed balanced rudders
- Cathodic protection for sterngear
- Sterngear, engines, fuel tank fillers, etc all electrically bonded

- Engine room lighting
- Engine room access from transom door and from cockpit deck
- Power-assisted electro-hydraulic steering system
- Trim tabs with indicators
- Electronic engine and gear shift controls
- Bow thruster (240kgf/529lbf) with dual-station controls
- Fresh water supply point in engine room
- Dripless self-aligning shaft seals

ELECTRICAL SYSTEMS

24 Volt:

- 4 x heavy-duty batteries for engine starting and windlass operation
- 6 x heavy-duty auxiliary batteries
- Battery link facility with remote control at helm position
- Both battery banks are charged using a voltage sensitive relay that parallels both battery banks when a charging source is present
- 1 x 60-amp 24v battery chargers and 1x combination 3.5kW inverter/100-amp charger
- Remote battery master switches with control switch at main switch panel

- Circuit breakers on all circuits
- 12v voltage dropper for certain navigation and radio circuits

220/240 Volt:

- 22.5kW generator in own sound shield with water-cooled and specially silenced exhaust
- 2 x 63-amp shore support inlet
- Generator/shore support change-over switch
- Polarity check system
- Earth leakage safety trip
- Circuit breakers on all circuits
- Power points (240v) in: owner's stateroom, guest cabins, galley and saloon area
- Shaver points in all bathrooms

FUEL SYSTEM

- Fuel tanks (in NS8 marine grade alloy) with interconnection system giving 1,320 gal/1,585 US gal/6,000l capacity
- Fuel fillers on port and starboard side decks
- High-capacity duplex fuel filters with water traps and change-over valves, water warning sensors connected to warning lights at lower helm
- Remote fuel cocks in cockpit locker

- Dual station fuel gauges on helm consoles

WATER SYSTEM

- Water tanks totalling 253 gal/304 US gal/1,150l plus 44 gal/53 US gal/200l hot water calorifier
- Water heated by engines and 240v immersion heater
- Automatic water pump with filter
- Main circuit breaker at switch panel
- Water level gauge
- Deck filler
- Electric freshwater toilet system with 99 gal/119 US gal/450l holding tank, content gauge and low noise electric overboard discharge, with macerator backup system as well as dockside discharge system

FIRE EXTINGUISHERS

- Automatic/manual override fire extinguishers in engine room with warning system at both helm positions and incorporating engine air vent closure system
- Hand operated fire extinguishers (7) in owner's stateroom, forward stateroom, port and starboard guest cabins, crew cabin, galley and lower helm position

BILGE PUMPS

- Automatic/manual override electric bilge pumps in engine room (2), rudder area and forward accommodation (7 in all)
- High-capacity manual bilge pump with valve system and suction points in same areas
- Electric bilge pumps have controls and warning lights at main helm and warning light with audible alarm at sportbridge helm

OTHER STANDARD EQUIPMENT

- Ensign staff
- Fenders (8)
- Mooring warps (4)
- Boathook
- First-aid kit
- Tool kit
- Owner's manual and engine manual
- Quilted bedspreads supplied to all cabins (except crew cabin)
- Set of towels (8 large, 8 hand)
- Set of crystal glassware (8 settings consisting of tumbler, highball and wine glasses)
- Set of Princess china (8 settings consisting of plate, side plate, bowl, cup and saucer)
- Set of cutlery (8 settings of David Mellor "Paris"

cutlery 7 pieces)

- Ship's document case
- Anchor winch back up handle

FINISHES

- Teak-laid decks to transom platform, cockpit deck, side decks, foredeck walk through, steps to sportbridge and sportbridge
- Timber-laid floor to galley, saloon and helm
- Furniture in choice Rovere Oak or Alba Oak in satin lacquer finish as standard. Silver Oak and Walnut in satin or gloss finishes available as an option.
- Tiled floors in all bathroom suites in guest accommodation
- Solid surface wash basin counter tops in all bathroom suites in master and guest accommodation
- Galley worktop in granite/quartz
- Choice of high-quality carpet and upholstery fabric from extensive range
- Blinds or sunscreens to all windows and portholes
- Crew cabin has non-slip safety flooring
- Crew bathroom floor is non-slip with white solid surface countertops